



WELCOME TO SHERCON



At Shercon, our goal isn't to blindly move products. Instead, our job is to solve a problem for our customers, and we'll recommend the best, shortest route to that solution. Whether that's a custom-molded or die-cut mask, or even a simple

standard mask, that's the route our Engineering Solutions Team recommends - and as quickly as possible (sometimes in even a few hours). The sooner you experience the benefits of our work - the sooner you enjoy line speed increases, reduced labor costs, lower material costs and improved finished product quality - the sooner we've succeeded.

Can our Engineering Solutions Team solve your problems? Sure, Shercon can do it!

Sincerely,
Keith Ennis, CEO

Our Mission:

- To lead with superior masking, molding, hanging and racking solutions
- To lead with exceptional customer service
- To lead with outstanding value

CONTINUOUS IMPROVEMENT



AT SHERCON, IT KEEPS GETTING BETTER.

Our standards, solutions and products are best in class - yet they're not frozen in time. We constantly improve our training, our materials, our support systems - all so we can deliver the products and services you need to stay competitive. What's it really mean to you?

- Better engineering and design support
- More responsive customer service
- Rapid turnaround times for prototypes and production
- Higher product quality
- Better overall value for our customers

Our ongoing commitment to improvement is reflected in our recent adoption of QS9000 - not just as a QC standard, but as a reflection of our corporate culture. It's how we establish long-term, mutually satisfying relationships with our customers. We're not in it for the short haul. Judging by our extremely high customer retention rate, neither are you.

**ONGOING IMPROVEMENT. LONG-TERM RELATIONSHIPS.
LEADING-EDGE SOLUTIONS. IT'S WHAT SHERCON DOES
EVERY DAY.**

ENGINEERING SOLUTIONS TEAM



MEET THE SHERCON ENGINEERING SOLUTIONS TEAM.

They're not just *the* Engineering Solutions Team. They're *your* Engineering Solutions Team. They're a hand-picked, experienced group of mechanical, industrial and chemical engineers. And they've created innovative, cost-effective solutions to problems for almost every imaginable industry. They're ready to solve your problems too. Their job? Simple:

- Identify your unique needs
- Design or recommend the most practical, cost effective solution
- Quickly create prototypes (sometimes less than a day)
- Refine the solution until it's exactly what you need

What can you expect from a solution created by the Shercon Engineering Solutions Team?

- Improved productivity (faster line speeds, lower labor costs)
- Improved finished product quality
- Reduced overall masking costs
- Elimination of costly secondary production line operations
- New finishing options based on greater flexibility

CUSTOM MASKING SOLUTIONS



CONSIDER CUSTOM - A TRULY PERFECT FIT WITH YOUR NEEDS

Standard molds, masks, hooks or racks often solve standard problems. But many customers are discovering the benefits of a custom engineered solution - one that applies more quickly, lasts longer, produces a superior finish, or even eliminates an extra finishing step entirely. The costs savings can be dramatic - simply eliminating a single manual finishing step can have a dramatic impact on line speeds and product quality.

- Improve worker productivity
- Improve production line speeds
- Create better finish quality
- Reject/refinish fewer parts
- Eliminate manual steps from the finishing process
- Reuse masks (lowering costs and satisfying "green" objectives)

How do you know if you're ready for a custom masking solution? Let Shercon's Engineering Solutions Team help. We can respond to your request with a proposal in a few days - and even create some prototypes in less than 24 hours. Ask us. We won't waste your time.



CUSTOM MASKING SOLUTIONS



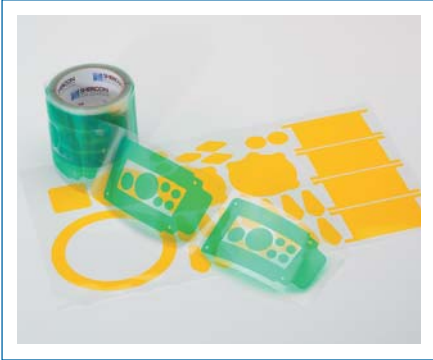
SOLVE COMPLEX MASKING PROBLEMS WITH CUSTOM MOLDS.

Recent advances in custom molded rubber masks have revolutionized the masking industry. Made from new high-tech materials, custom molded rubber masks can protect even unusual surfaces and parts against the most hostile finishing processes - and install and remove in literally seconds. They are reusable, durable, and can mask almost any two or three dimensional part or aperture. Tooling costs can be higher than with other masking methods, but eliminating multiple manual finishing steps or dramatically speeding installation and removal typically return that investment very, very quickly.

1. Send us a drawing, sketch or part to be masked along with a description of the challenge you face
2. Within a handful of days, we will send you an analysis, quote, and concept drawing (if appropriate)
3. Upon acceptance we produce a detailed engineering drawing
4. Approve the drawing, and we will mold prototype masks for testing and evaluation at your facility
5. After approval/refinement of samples is complete, Shercon can produce custom molded masks in as little as 15 days



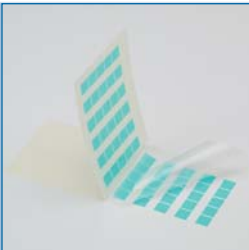
CUSTOM MASKING SOLUTIONS



EFFICIENT AND EFFECTIVE: CUSTOM DIE-CUTS

Extremely effective when masking a flat surface, custom die-cuts are quick to apply and remove - and can even be fitted with pull tabs to speed the process. Ideal for powder coat, E-coat, wet paint and even plating applications, custom die cuts are an economical way to eliminate tedious manual masking steps from any finishing line. These are often a cost-savings replacement for laboriously creating masks in your own finish shop.

1. Provide a drawing, sketch, part or description - and how this application is challenging you
2. Within 24 hours, we'll create prototypes for testing - and ship them to you via overnight express so you can test them the next day
3. Production can begin as soon as we receive your approval and purchase order - with delivery times as low as a couple days



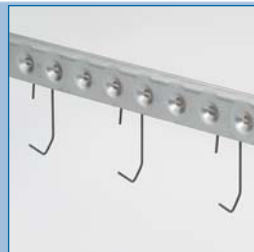
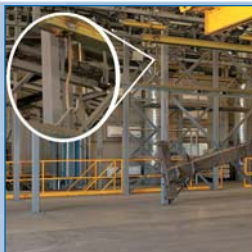
CUSTOM MASKING SOLUTIONS



HANG PROBLEMS OUT TO DRY WITH CUSTOM HOOKS

Something as simple as a new hook design can often solve a number of problems in your finishing process - boosting quality and throughput along the way. It can be a simple solution to an often complex problem. Fortunately, Shercon's Engineering Solutions Team understands how a finishing line works, and what problems a custom-designed hook will solve. Think a custom hook design might help you?

1. Describe your problem to us
2. Detail the weight and orientation of the parts being finished
3. Tell us the length of the hook and allowable contact points
4. We will manufacture prototypes of a custom hook for you - often within 48 hours
5. Once you've tested and refined your custom hook on your line, we'll quickly move our design to production



STANDARD MASKING PARTS

MASKING CAPS

Ultrabake™ Caps	9
Ultrabake™ Washer Caps	11
Ultrabake™ Grounding Caps	
Vinyl Caps	12

MASKING PLUGS

Ultrabake™ Plugs	13
Hollow Ultrabake™ Plugs	14
Ultrabake™ Plugs with Handles	15
Hollow Ultrabake™ Plugs with Handles	
Green Neoprene Plugs	16
Black Neoprene Plugs	17
Dual Flanged Pull Plugs	18
Ultrabake™ Washer Pull Plugs	
E.P.D.M. Pull Plugs	19
Ultrabake™ Pull Plugs	20

MASKING SPECIALTY PLUGS

Ultrabake™ Thread Mask	21
Ultrabake™ Thread Mask LS	
Ultrabake™ Flangeless Plugs	22
E.P.D.M. Flangeless Plugs	
Ultrabake™ Washer Plugs	23
Ultrabake™ Step Plugs	
Ultrabake™ Flanged Plugs	24
Ultrabake™ Hollow Washer Plugs	
Miscellaneous Ultrabake™ Plugs	25
Ultrabake™ Zerk Caps	
Mouse Tail Plugs	26
Ultrabake™ Hollow Cone Plugs	

MISCELLANEOUS MASKING

Ultrabake™ Sheeting	27
Ultrabake™ Cord	
Ultrabake™ Tubing	28

MASKING TAPES

PC21 - Green Tape	29
PC30 - Yellow Tape	30
PC11 - Red Tape	31
PC90 - Blue Tape	
#22 - Polyimide Tape	32
PC198 - Glass Cloth Tape	
KD11 - Masking Tape	33
SRT - Silicone Rubber Tape	

MASKING DIE CUTS

PC Discs – Powder Peel Green Discs	34
PC Die Cuts – Powder Coating Donuts,	35
Powder Coating Squares,	
Powder Coating Rectangles	
PR Discs – Powder Peel Red Discs	36
PB Discs – Powder Peel Blue Discs	37
KP Discs – Polyimide Discs	38
GC Discs – Glass Cloth Discs	39
EZ Discs – EZ-Peel™ Discs	40
KD Discs – Kwiky Dot Discs	41

HOOKS

Hook Load Chart	42
V – Hooks	43
S – Hooks	
C – Hooks	
CV – Hooks	
Square V – Hooks	45
Snap Hooks	46
Smart Hooks™	47
Smart Bar™	
Modular Racks	48
Spin Hooks	49

ULTRABAKE™ CAPS 600°F (315°C)

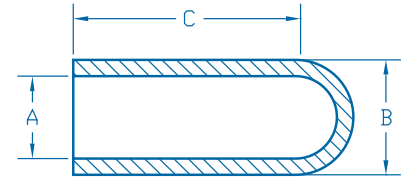


- Recommended for Powder Coating, E-Coating, Plating and Anodizing
- Ultrabake™ Caps mask studs, tube ends, and slotted holes
- Color coding increases visibility and eases the job of sorting plugs after use

Part Number	Color	Fits Thread		Dimensions (Inches)			Quantity Per Bag
		Metric	UNC	A	B	C	
SC37-0500	CLEAR			0.037	0.100	0.500	1000
SC62	DARK BLUE			0.062	0.187	1.000	1000
SC70	CLEAR	M2	2-56	0.070	0.170	1.000	1000
SC93	PINK		3-48	0.093	0.195	0.750	1000
SC93-0500	DARK GREY		3-48	0.093	0.195	0.500	1000
SC93-1000	WHITE		3-48	0.093	0.195	1.000	1000
SC100-0500	DARK BLUE	M3	4-40	0.100	0.200	0.500	1000
SC100	LIGHT GREEN	M3	4-40	0.100	0.200	1.000	1000
SC109-0500	YELLOW		5-40	0.109	0.215	0.500	1000
SC109	GREY		5-40	0.109	0.215	0.750	1000
SC109-1000	WHITE		5-40	0.109	0.215	1.000	1000
SC125-0500	LIGHT BLUE		6-32	0.125	0.250	0.500	1000
SC125	BLACK		6-32	0.125	0.250	1.000	1000
SC140-0500	CLEAR			0.140	0.265	0.500	1000
SC140	WHITE			0.140	0.265	1.000	1000
SC148-0500	DARK BLUE	M4		0.148	0.240	0.500	1000
SC148-0750	DARK GREY	M4		0.148	0.240	0.750	1000
SC148	PINK	M4		0.148	0.240	1.000	1000
SC156-0500	LIGHT GREEN		8-32	0.156	0.280	0.500	1000
SC156	YELLOW		8-32	0.156	0.280	1.000	1000
SC156-1250	CLEAR		8-32	0.156	0.280	1.250	1000
SC164-1000	BLACK			0.164	0.292	1.000	1000
SC172-0500	GREY		10-24	0.172	0.300	0.500	1000
SC172	LIGHT BLUE		10-24	0.172	0.300	1.000	1000
SC172-1500	CLEAR		10-24	0.172	0.300	1.500	1000
SC180	BLACK	M5		0.180	0.280	1.000	1000
SC187-0500	WHITE		12-24	0.187	0.315	0.500	1000
SC187-0750	LIGHT BLUE		12-24	0.187	0.315	0.750	1000
SC187	CLEAR		12-24	0.187	0.315	1.000	1000
SC218	YELLOW			0.218	0.338	1.000	500
SC223-0500	DARK BLUE	M6		0.223	0.345	0.500	500
SC223-1000	BLACK	M6		0.223	0.345	1.000	500
SC223	PINK	M6		0.223	0.345	1.500	500
SC234-0500	WHITE		1/4-20	0.234	0.360	0.500	500
SC234	LIGHT GREEN		1/4-20	0.234	0.360	1.000	500
SC234-1500	YELLOW		1/4-20	0.234	0.360	1.500	500
SC250-0500	CLEAR			0.250	0.380	0.500	500
SC250	GREY			0.250	0.380	1.000	500
SC281-0500	YELLOW		5/16-18	0.281	0.400	0.500	500
SC281	LIGHT BLUE		5/16-18	0.281	0.400	1.000	500
SC295-0500	BLACK	M8		0.295	0.420	0.500	500
SC295-1000	LIGHT GREEN	M8		0.295	0.420	1.000	500
SC295	CLEAR	M8		0.295	0.420	1.500	500

ULTRABAKE™ CAPS 600°F (315°C)

Part Number	Color	Fits Thread		Dimensions (Inches)			Quantity Per Bag
		Metric	UNC	A	B	C	
SC312	WHITE			0.312	0.440	1.000	500
SC312-1500	PINK			0.312	0.440	1.500	500
SC340	BLACK			0.340	0.460	1.000	500
SC355	LIGHT GREEN		3/8-16	0.355	0.485	1.500	500
SC375-0500	PINK	M10		0.375	0.505	0.500	500
SC375-0750	DARK BLUE	M10		0.375	0.505	0.750	500
SC375	YELLOW	M10		0.375	0.505	1.000	500
SC375-1500	GREY			0.375	0.505	1.500	500
SC406	LIGHT BLUE		7/16-14	0.406	0.531	1.000	500
SC437	BLACK			0.437	0.565	1.000	500
SC456-1000	PINK	M12		0.456	0.581	1.000	500
SC456	CLEAR	M12		0.456	0.581	1.500	500
SC468	WHITE			0.468	0.593	1.000	500
SC480-1000	LIGHT GREY		1/2-13	0.480	0.605	1.000	500
SC480	PINK		1/2-13	0.480	0.605	1.500	500
SC500	LIGHT GREEN			0.500	0.625	1.500	500
SC535	YELLOW	M14		0.535	0.635	1.500	250
SC535-3000	GREY	M14		0.535	0.635	3.000	250
SC562	LIGHT BLUE			0.562	0.686	1.500	250
SC600	BLACK	M16	5/8-11	0.600	0.724	1.500	250
SC625	CLEAR			0.625	0.750	1.500	250
SC625-2500	WHITE			0.625	0.750	2.500	250
SC687	PINK			0.687	0.812	1.500	250
SC730	LIGHT GREEN	M19		0.730	0.855	1.500	250
SC750	YELLOW			0.750	0.875	1.500	250
SC750-3500	GREY			0.750	0.875	3.500	250
SC780	LIGHT BLUE			0.780	0.905	1.500	250
SC812	BLACK			0.812	0.937	1.500	250
SC875	CLEAR			0.875	1.000	1.500	250
SC937	WHITE			0.937	1.062	1.500	250
SC970	PINK	M25		0.970	1.095	1.500	250
SC1000	LIGHT GREEN			1.000	1.125	1.500	250
SC1000-2000	YELLOW			1.000	1.125	2.000	250
SC1062	GREY			1.062	1.187	2.000	100
SC1125	LIGHT BLUE			1.125	1.250	1.500	100
SC1187	BLACK			1.187	1.312	1.500	100
SC1250	CLEAR			1.250	1.382	1.500	100
SC1350	WHITE			1.350	1.484	1.750	100
SC1500	PINK			1.500	1.625	1.000	100
SC1500-1750	LIGHT GREEN			1.500	1.625	1.750	100
SC1750	YELLOW			1.750	1.875	2.000	100
SC1875	GREY			1.875	2.000	2.000	100
SC2000	LIGHT BLUE			2.000	2.125	2.000	100



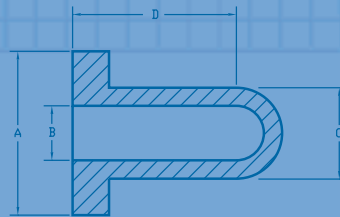
- These caps have excellent sealing power and are rugged and durable
- Reusable
- Caps will stretch to mask larger diameters

ULTRABAKE™ WASHER CAPS 600°F (315°C)

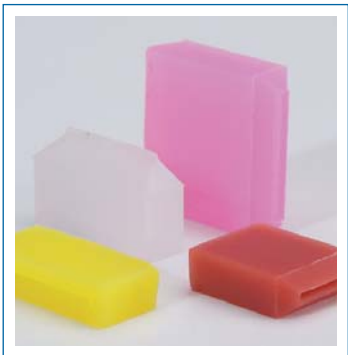


- Recommended for Powder Coating, E-Coating, Plating and Anodizing
- Provides a concentric mask around a stud
- May be used as a cap or plug
- Reusable

Part Number	Color	Thread	Dimensions (Inches)				Quantity Per Bag
			A	B	C	D	
WC125-0500	CLEAR		0.500	0.125	0.260	1.000	500
WC156-0500	CLEAR		0.500	0.156	0.320	1.000	500
WC172-0500	CLEAR		0.500	0.172	0.385	1.000	500
WC027-012	LIGHT GREEN	M3	0.472	0.106	0.244	1.000	500
WC037-012	PINK	M4	0.472	0.146	0.264	1.000	500
WC046-015	CLEAR	M5	0.591	0.181	0.323	1.000	500
WC056-015	RED	M6	0.591	0.220	0.343	1.000	500
WC075-018	BLACK	M8	0.709	0.295	0.421	1.000	250
WC095-018	YELLOW	M10	0.820	0.374	0.500	1.500	250
WC115-025	CLEAR	M12	0.984	0.453	0.657	1.500	250
WC155-031	PURPLE	M16	1.220	0.610	0.815	1.500	250
WC195-038	GREY	M20	1.496	0.768	0.972	1.500	250

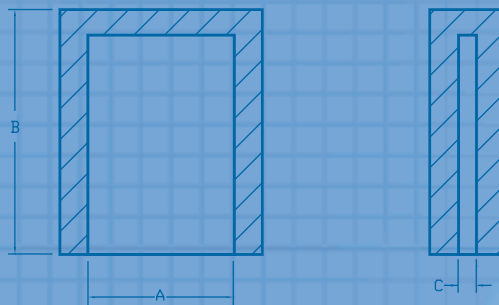


ULTRABAKE™ GROUNDING CAPS 600°F (315°C)



- Special rectangular cap used for Powder Coating and E-Coating
- Ideal for masking grounding tabs

Part Number	Color	Dimensions (Inches)			Quantity Per Bag
		A	B	C	
SRC-1	CLEAR	0.248	0.394	0.030	1000
SRC-2	RUSTY RED	0.248	0.456	0.030	1000
SRC-3	CLEAR	0.470	0.374	0.040	1000
SRC-4	YELLOW	0.460	0.280	0.035	1000
SRC-5	PINK	0.490	0.687	0.047	1000

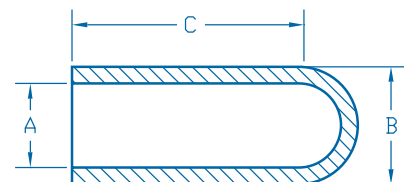


VINYL CAPS 350°F (177°C)

Part Number	Dimensions (Inches)			Quantity Per Bag
	A	B	C	
PS62	0.062	0.139	0.500	1000
PS80-0500	0.080	0.180	0.500	1000
PS80	0.080	0.180	0.750	1000
PS93-0500	0.093	0.193	0.500	1000
PS93	0.093	0.193	0.750	1000
PS109-0500	0.109	0.209	0.500	1000
PS109	0.109	0.209	1.000	1000
PS125-0500	0.125	0.225	0.500	1000
PS125	0.125	0.225	1.000	1000
PS140-0500	0.140	0.260	0.500	1000
PS140	0.140	0.260	1.000	1000
PS156-0500	0.156	0.266	0.500	1000
PS156	0.156	0.266	1.000	1000
PS172-0500	0.172	0.272	0.500	1000
PS172	0.172	0.272	1.000	1000
PS187-0500	0.187	0.287	0.500	1000
PS187	0.187	0.287	1.000	1000
PS203-0500	0.203	0.313	0.500	1000
PS203	0.203	0.313	1.000	1000
PS218-0500	0.218	0.328	0.500	1000
PS218	0.218	0.328	1.000	1000
PS234-0500	0.234	0.344	0.500	1000
PS234	0.234	0.344	1.000	1000
PS250-0500	0.250	0.370	0.500	1000
PS250	0.250	0.370	1.000	1000
PS281-0500	0.281	0.391	0.500	1000
PS281	0.281	0.391	1.000	1000
PS312-0500	0.312	0.432	0.500	1000
PS312	0.312	0.432	1.000	1000
PS343	0.343	0.463	1.000	1000
PS375	0.375	0.505	1.000	1000
PS406	0.406	0.536	1.000	1000
PS437	0.437	0.567	1.000	1000
PS500	0.500	0.610	1.000	500
PS531	0.531	0.646	1.000	500
PS562	0.562	0.682	1.000	500
PS625	0.625	0.745	1.000	500
PS687	0.687	0.807	1.000	500
PS750	0.750	0.880	1.000	500
PS812	0.812	0.942	1.000	500
PS875	0.875	1.005	1.000	500
PS937	0.937	1.067	1.000	500
PS1000	1.000	1.130	1.000	500
PS1062	1.062	1.192	1.000	500
PS1125	1.125	1.255	1.000	500
PS1187	1.187	1.317	1.000	500
PS1250	1.250	1.380	1.000	500
PS1375	1.375	1.505	1.000	500
PS1500	1.500	1.630	1.000	500
PS1625	1.625	1.755	1.000	500
PS1750	1.750	1.880	1.000	500
PS1875	1.875	2.005	1.000	500
PS2000	2.000	2.130	1.000	500



- Recommended for Painting, Plating and Anodizing
- Ideal for studs, slotted holes, tube ends and threaded holes
- Reusable
- High quality plastisol material
- High visibility yellow color

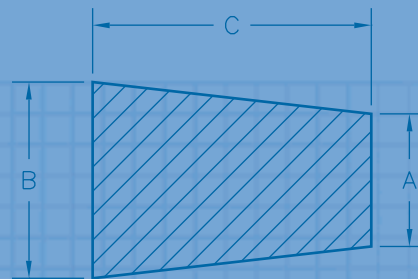


ULTRABAKE™ PLUGS 600°F (315°C)



- Recommended for Powder Coating, E-Coating, Plating and Anodizing
- Plugs threaded or non-threaded holes
- Color coding increases visibility and eases the job of sorting the plugs after use
- Excellent sealing power and rugged durability ensure quality results after repeated usage

Part Number	Color	Dimensions (Inches)			Quantity Per Bag
		A	B	C	
UP99-04	CLEAR	0.031	0.125	0.625	1000
UP100-04	LIGHT GREEN	0.063	0.125	0.625	1000
UP101-04	PINK	0.063	0.188	0.625	1000
UP102-04	BLACK	0.125	0.250	0.750	1000
UP103-04	DARK RED	0.188	0.344	0.625	1000
UP104-04	YELLOW	0.250	0.375	0.750	100
UP105-04	WHITE	0.250	0.375	0.500	100
UP000-04	CLEAR	0.344	0.500	0.813	100
UP00-04	PURPLE	0.406	0.594	1.000	100
UP108-04	LIGHT GREEN	0.438	0.625	0.875	100
UP0-04	PINK	0.500	0.656	1.000	100
UP1-04	BLACK	0.563	0.750	1.000	100
UP2-04	RED	0.625	0.781	1.000	100
UP3-04	YELLOW	0.719	0.938	1.000	100
UP4-04	CLEAR	0.750	1.000	1.000	100
UP5-04	LIGHT GREEN	0.906	1.063	1.000	100
UP6-04	DARK GREEN	1.031	1.250	1.000	100
UP7-04	LIGHT BLUE	1.188	1.438	1.000	50
UP8-04	CLEAR	1.313	1.625	1.000	25
UP9-04	RED	1.469	1.750	1.000	25
UP10-04	CLEAR	1.625	1.969	1.000	25
UP11-04	DARK BLUE	1.875	2.203	1.000	25
UP12-04	RED	2.125	2.500	1.000	25

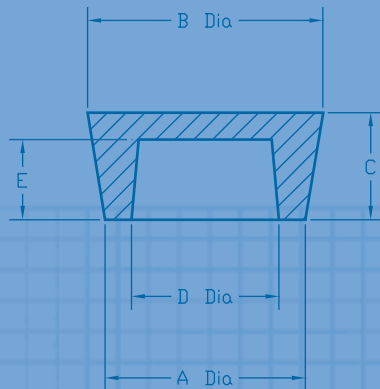


HOLLOW ULTRABAKE™ PLUGS 600°F (315°C)

Part Number	Color	Dimensions (Inches)					Quantity Per Bag
		A	B	C	D	E	
HUP5-04	LIGHT GREEN	0.906	1.063	1.000	0.406	0.750	100
HUP5.5-04	PINK	0.959	1.109	1.000	0.470	0.700	100
HUP6-04	DARK GREEN	1.031	1.250	1.000	0.531	0.750	100
HUP6.5-04	YELLOW	1.125	1.344	1.000	0.600	0.750	100
HUP7-04	DARK BLUE	1.187	1.437	1.000	0.531	0.750	100
HUP7.5-04	WHITE	1.187	1.500	1.000	0.680	0.750	100
HUP8-04	LIGHT BLUE	1.313	1.625	1.000	0.813	0.750	100
HUP8.5-04	PINK	1.406	1.688	1.000	0.900	0.750	100
HUP9-04	RED	1.469	1.750	1.000	0.969	0.750	100
HUP9.5-04	DARK GREEN	1.500	1.813	1.000	1.000	0.750	50
HUP10-04	CLEAR	1.625	1.969	1.000	1.125	0.750	50
HUP10.5-04	YELLOW	1.750	2.080	1.000	1.200	0.750	50
HUP11-04	DARK BLUE	1.875	2.203	1.000	1.375	0.750	50
HUP11.5-04	DARK GREEN	2.000	2.469	1.000	1.250	0.625	50
HUP12-04	RED	2.126	2.500	1.000	1.375	0.625	50
HUP13-04	LIGHT BLUE	2.281	2.687	1.000	1.531	0.625	50
HUP13.5-04	PURPLE	2.437	2.953	1.375	1.687	1.000	50
HUP13.7-04	LIGHT GREEN	2.677	3.228	1.500	1.677	1.000	10
HUP14-04	WHITE	3.000	3.500	1.500	2.000	1.000	10
HUP15-04	RUSTY RED	3.250	4.000	1.500	2.250	1.000	10
HUP16-04	CLEAR	3.500	5.000	2.000	2.500	1.500	5



- Recommended for Powder Coating, Anodizing, and E-Coating
- Plugs threaded or non-threaded holes
- Excellent sealing power
- Rugged and durable
- Reusable
- Significant cost savings over traditional tapered plugs
- More flexible than solid plugs and therefore easier to insert
- Color coding eases the job of sorting the plugs after use and increases visibility

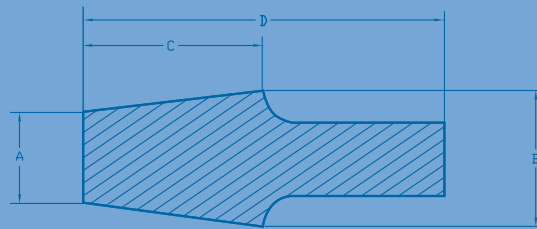


ULTRABAKE™ PLUGS WITH HANDLES 600°F (315°C)



- Recommended for Powder Coating, E-Coating, Plating and Anodizing
- Plugs threaded or non-threaded holes
- Color coding increases visibility and eases the job of sorting the plugs after use
- Excellent sealing power and rugged durability ensure quality results after repeated usage

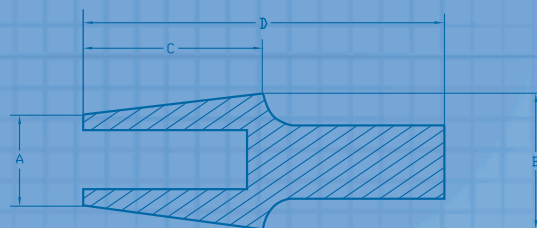
Part Number	Color	Dimensions (Inches)				Quantity Per Bag
		A	B	C	D	
UP99-H	CLEAR	0.031	0.125	0.625	1.000	1000
UP100-H	LIGHT GREEN	0.063	0.125	0.625	1.000	1000
UP101-H	PINK	0.063	0.188	0.625	1.130	1000
UP102-H	BLACK	0.125	0.250	0.750	1.250	1000
UP103-H	DARK RED	0.188	0.344	0.625	1.130	1000
UP104-H	YELLOW	0.250	0.375	0.750	1.250	100
UP105-H	WHITE	0.250	0.375	0.500	1.000	100
UP00-H	PURPLE	0.406	0.594	1.000	1.750	100
UP108-H	LIGHT GREEN	0.438	0.625	0.875	1.625	100
UP0-H	PINK	0.500	0.656	1.000	1.750	100
UP2-H	RED	0.625	0.781	1.000	1.750	100
UP3-H	YELLOW	0.719	0.938	1.000	1.750	100
UP4-H	CLEAR	0.750	1.000	1.000	1.750	100



HOLLOW ULTRABAKE™ PLUGS WITH HANDLES 600°F (315°C)

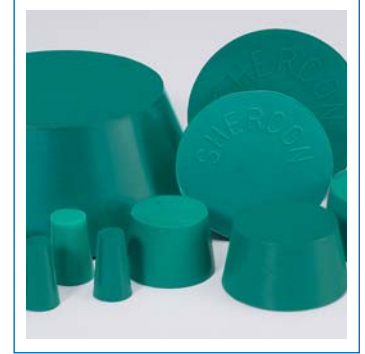
- Handles on smaller plugs make insertion and removal quicker

Part Number	Color	Dimensions (Inches)				Quantity Per Bag
		A	B	C	D	
HUP5-H	LIGHT GREEN	0.906	1.063	1.000	1.750	100
HUP6-H	DARK GREEN	1.031	1.250	1.000	1.750	100
HUP7-H	DARK BLUE	1.187	1.437	1.000	1.750	50
HUP10-H	CLEAR	1.625	1.969	1.000	1.750	25
HUP11-H	DARK BLUE	1.875	2.203	1.000	1.750	25

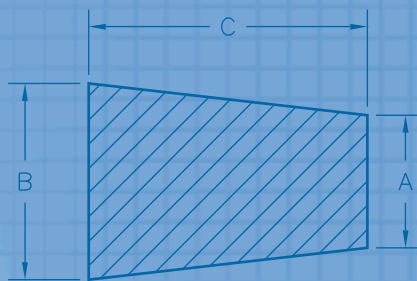


GREEN NEOPRENE PLUGS 350°F (177°C)

Part Number	Dimensions (Inches)			Quantity Per Bag
	A	B	C	
GN99	0.031	0.125	0.625	1000
GN100	0.063	0.125	0.625	1000
GN101	0.063	0.188	0.625	1000
GN102	0.125	0.250	0.750	1000
GN103	0.188	0.344	0.625	1000
GN104	0.250	0.375	0.750	1000
GN105	0.250	0.375	0.500	100
GN106	0.344	0.438	0.688	100
GN000	0.344	0.500	0.813	100
GN107	0.375	0.563	1.000	100
GN00	0.406	0.594	1.000	100
GN108	0.438	0.625	0.813	100
GN109	0.500	0.656	1.000	100
GN110	0.563	0.750	1.000	100
GN111	0.625	0.781	1.000	100
GN112	0.719	0.938	1.000	100
GN114	0.750	1.000	1.000	100
GN116	0.906	1.063	1.000	100
GN118	1.031	1.250	1.000	100
GN120	1.188	1.438	1.000	100
GN122	1.313	1.625	1.000	50
GN124	1.469	1.750	1.000	50
GN126	1.625	1.969	1.000	50
GN128	1.875	2.203	1.000	25
GN129	2.000	2.469	1.000	25
GN130	2.125	2.500	1.000	25
GN132	2.281	2.688	1.000	25
GN133	2.438	2.953	1.469	1
GN134	3.000	3.500	1.500	1
GN136	3.250	4.000	1.500	1
GN138	3.500	5.000	2.000	1



- Recommended for Painting and Plating
- Carbon-free
- Reusable

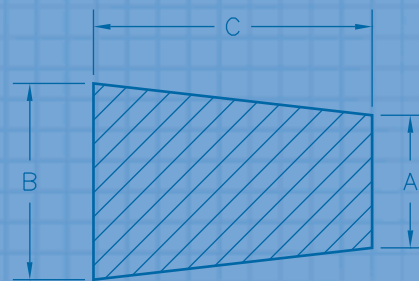


BLACK NEOPRENE PLUGS 350°F (177°C)



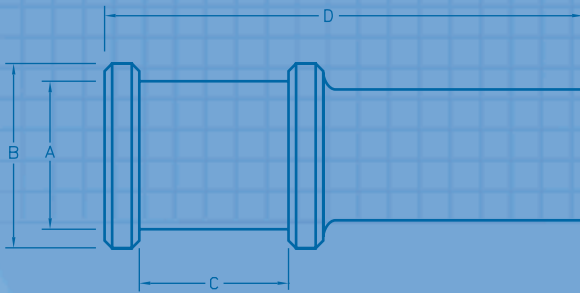
- Recommended for Painting, Plating, Anodizing, and Blasting
- Reusable

Part Number	Dimensions (Inches)			Quantity Per Bag
	A	B	C	
BN99	0.031	0.125	0.625	1000
BN100	0.063	0.125	0.625	1000
BN101	0.063	0.188	0.625	1000
BN102	0.125	0.250	0.750	1000
BN103	0.188	0.344	0.625	1000
BN104	0.250	0.375	0.750	1000
BN105	0.250	0.375	0.500	100
BN106	0.344	0.438	0.688	100
BN000	0.344	0.500	0.813	100
BN107	0.375	0.563	1.000	100
BN00	0.406	0.594	1.000	100
BN108	0.438	0.625	0.813	100
BN109	0.500	0.656	1.000	100
BN110	0.563	0.750	1.000	100
BN111	0.625	0.781	1.000	100
BN112	0.719	0.938	1.000	100
BN114	0.750	1.000	1.000	100
BN116	0.906	1.063	1.000	100
BN118	1.031	1.250	1.000	100
BN120	1.188	1.438	1.000	100
BN122	1.313	1.625	1.000	50
BN124	1.469	1.750	1.000	50
BN126	1.625	1.969	1.000	50
BN128	1.875	2.203	1.000	25
BN129	2.000	2.469	1.000	25
BN130	2.125	2.500	1.000	25
BN132	2.281	2.688	1.000	25
BN133	2.438	2.953	1.469	1
BN134	3.000	3.500	1.500	1
BN136	3.250	4.000	1.500	1
BN138	3.500	5.000	2.000	1



DUAL FLANGED PULL PLUGS 600°F (315°C)

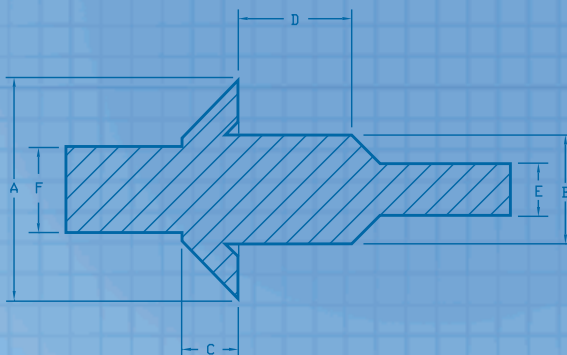
Part Number	Color	Thread Size	Dimensions (Inches)				Quantity Per Bag
			A	B	C	D	
DFPP-M6	DARK GREEN	M6	0.197	0.307	0.268	1.299	1000
DFPP-M8	RUSTY RED	M8	0.264	0.374	0.311	1.339	1000
DFPP-M10	DARK GREEN	M10	0.335	0.445	0.354	1.378	500
DFPP-M12	PURPLE	M12	0.406	0.512	0.457	1.772	250
DFPP-M16	WHITE	M16	0.531	0.669	0.551	1.969	250
DFPP-M20	DARK BLUE	M20	0.669	0.827	0.709	2.283	100



- Recommended for weld nuts
- Masks off chamfer, first thread and last thread
- Will not blow out due to air pressure

ULTRABAKE™ WASHER PULL PLUGS 600°F (315°C)

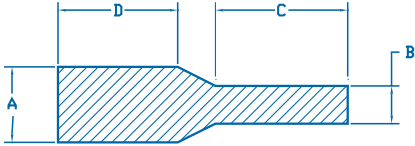
Part Number	Color	Thread Size	Dimensions (Inches)						Quantity Per Bag
			A	B	C	D	E	F	
UWPP-M3	DARK BLUE	M3	0.394	0.105	0.107	0.390	0.060	0.090	250
UWPP-M4	DARK GREEN	M4	0.394	0.140	0.107	0.390	0.080	0.120	250
UWPP-M5	CLEAR	M5	0.394	0.176	0.107	0.390	0.100	0.150	250
UWPP-M6	WHITE	M6	0.591	0.211	0.165	0.390	0.120	0.180	250
UWPP-M8	GREY	M8	0.591	0.283	0.165	0.390	0.161	0.240	250
UWPP-M10	YELLOW	M10	0.787	0.375	0.210	0.390	0.214	0.320	100
UWPP-M12	PINK	M12	0.787	0.428	0.210	0.390	0.244	0.360	100
UWPP-500	PINK	10-24	0.500	0.167	0.107	0.390	0.095	0.140	250
UWPP-562	YELLOW	12-24	0.562	0.193	0.107	0.390	0.110	0.160	250
UWPP-625	GREEN	1/4-20	0.625	0.225	0.107	0.390	0.128	0.190	250
UWPP-688	CLEAR	5/16-18	0.688	0.284	0.165	0.390	0.162	0.240	250
UWPP-812	GREY	3/8-16	0.812	0.342	0.165	0.390	0.195	0.290	100
UWPP-922	WHITE	7/16-14	0.922	0.400	0.210	0.390	0.228	0.340	100
UWPP-1060	DARK BLUE	1/2-13	1.060	0.459	0.210	0.390	0.262	0.390	100



- Recommended for Powder Coating, E-Coating, Plating and Anodizing
- Ideal for threaded or non-threaded holes
- Dual purpose:
 - Pull through to mask hole and grounding area
 - Push in to mask hole and countersink area

E.P.D.M. PULL PLUGS

350°F (177°C)



- Recommended for Painting and Anodizing
- Plug threaded or non-threaded through holes
- Reusable

Part Number	Hole Fit	Thread	Dimensions (Inches)				Quantity Per Bag
			A	B	C	D	
PP06	1/20		0.062	0.046	0.337	0.375	500
PP07	1/16		0.067	0.047	0.610	0.625	500
PP08	1/16	M2	0.073	0.046	0.590	0.612	500
PP09	5/64		0.091	0.052	0.625	0.625	500
PP10	5/64		0.093	0.050	0.700	0.700	500
PP11	3/32		0.104	0.062	0.625	0.525	500
PP11A	7/64		0.125	0.062	0.625	0.625	500
PP14	1/8		0.130	0.093	1.000	1.000	500
PP15	1/8		0.130	0.093	0.700	0.650	500
PP17	1/8		0.142	0.085	0.558	0.625	500
PP18	9/64		0.154	0.083	0.625	0.632	500
PP20	9/64		0.156	0.062	0.750	0.625	500
PP22	5/32		0.162	0.096	0.581	0.625	500
PP23	11/64	M5	0.195	0.110	0.625	0.625	500
PP30	3/16	M6	0.218	0.130	1.000	1.000	500
PP33	7/32		0.225	0.125	1.000	1.000	500
PP37	1/4		0.257	0.130	1.000	1.000	500
PP40	17/64	M8	0.275	0.125	0.920	0.937	500
PP40LS	17/64	M8	0.275	0.146	2.000	2.000	500
PP42	19/64		0.316	0.152	0.910	1.000	500
PP42A	5/16		0.333	0.251	1.100	0.757	500
PP43	5/16		0.335	0.153	1.000	1.000	500
PP50	11/32		0.350	0.193	0.925	0.881	500
PP55	3/8	M10	0.384	0.154	1.000	1.000	250
PP55LS	3/8	M10	0.384	0.204	2.000	2.000	250
PP60	13/32		0.408	0.191	1.000	1.009	250
PP66	7/16	M12	0.444	0.255	0.990	1.000	250
PP67	7/16		0.445	0.255	1.000	1.000	250
PP70	29/64		0.472	0.243	1.000	1.000	250
PP73	15/32		0.496	0.250	1.000	1.000	250
PP73LS	15/32		0.496	0.263	2.000	2.000	250
PP77	1/2		0.510	0.256	0.956	1.000	250
PP80	33/64	M14	0.530	0.250	1.000	1.000	250
PP85	3/16		0.571	0.303	1.001	1.000	250
PP89	19/32		0.612	0.250	1.000	1.000	250
PP89LS	19/32		0.612	0.325	2.000	2.000	250
PP90	5/8		0.640	0.375	1.000	1.000	100
PP95	13/16		0.707	0.375	1.326	1.250	100
PP95LS	13/16		0.707	0.375	2.000	2.000	100
PP97	23/32		0.728	0.375	1.100	1.125	100
PP100	3/4	M20	0.770	0.375	0.927	1.000	100
PP100LS	3/4	M20	0.770	0.408	2.000	2.000	100
PP105	25/32		0.807	0.428	1.250	1.250	100
PP110	7/8		0.888	0.372	1.000	1.000	100
PP120	1		1.020	0.375	0.970	1.000	100
PP140	1-3/8		1.380	0.732	1.500	1.500	50

ULTRABAKE™ PULL PLUGS 600°F (315°C)

Part Number	Color	Hole Fit	Thread	Dimensions (Inches)				Quantity Per Bag
				A	B	C	D	
SPP06	CLEAR	1/20		0.062	0.046	0.337	0.375	500
SPP07	PINK	1/16		0.067	0.047	0.610	0.625	500
SPP08	LIGHT GREEN	1/16	M2	0.073	0.046	0.590	0.612	500
SPP09	YELLOW	5/64		0.091	0.052	0.625	0.625	500
SPP10	GREY	5/64		0.093	0.050	0.700	0.700	500
SPP11	LIGHT BLUE	3/32		0.104	0.062	0.625	0.525	500
SPP11A	WHITE	7/64		0.125	0.062	0.625	0.625	500
SPP14	CLEAR	1/8		0.130	0.093	1.000	1.000	500
SPP15	PINK	1/8		0.130	0.093	0.700	0.650	500
SPP17	LIGHT GREEN	1/8		0.142	0.085	0.558	0.625	500
SPP18	YELLOW	9/64		0.154	0.083	0.625	0.632	500
SPP20	GREY	9/64		0.156	0.062	0.750	0.625	500
SPP22	LIGHT BLUE	5/32		0.162	0.096	0.581	0.625	500
SPP23	WHITE	11/64	M5	0.195	0.110	0.625	0.625	500
SPP30	CLEAR	3/16	M6	0.218	0.130	1.000	1.000	500
SPP33	PINK	7/32		0.225	0.125	1.000	1.000	500
SPP37	LIGHT GREEN	1/4		0.257	0.130	1.000	1.000	500
SPP40	YELLOW	17/64	M8	0.275	0.125	0.920	0.937	500
SPP40LS	WHITE	17/64	M8	0.275	0.146	2.000	2.000	500
SPP42	GREY	19/64		0.316	0.152	0.910	1.000	500
SPP42A	LIGHT BLUE	5/16		0.333	0.251	1.100	0.757	500
SPP43	WHITE	5/16		0.335	0.153	1.000	1.000	500
SPP50	CLEAR	11/32		0.350	0.193	0.925	0.881	500
SPP55	PINK	3/8	M10	0.384	0.154	1.000	1.000	250
SPP55LS	DARK BLUE	3/8	M10	0.384	0.204	2.000	2.000	250
SPP60	LIGHT GREEN	13/32		0.408	0.191	1.000	1.009	250
SPP66	YELLOW	7/16	M12	0.444	0.255	0.990	1.000	250
SPP67	GREY	7/16		0.445	0.255	1.000	1.000	250
SPP70	LIGHT BLUE	29/64		0.472	0.243	1.000	1.000	250
SPP73	WHITE	15/32		0.496	0.250	1.000	1.000	250
SPP73LS	LIGHT GREEN	15/32		0.496	0.263	2.000	2.000	250
SPP77	CLEAR	1/2		0.510	0.256	0.956	1.000	250
SPP80	PINK	33/64	M14	0.530	0.250	1.000	1.000	250
SPP85	LIGHT GREEN	3/16		0.571	0.303	1.001	1.000	250
SPP89	YELLOW	19/32		0.612	0.250	1.000	1.000	250
SPP89LS	CLEAR	19/32		0.612	0.325	2.000	2.000	250
SPP90	GREY	5/8		0.640	0.375	1.000	1.000	100
SPP95	LIGHT BLUE	13/16		0.707	0.375	1.326	1.250	100
SPP95LS	DARK GREEN	13/16		0.707	0.375	2.000	2.000	100
SPP97	WHITE	23/32		0.728	0.375	1.100	1.125	100
SPP100	CLEAR	3/4	M20	0.770	0.375	0.927	1.000	100
SPP100LS	YELLOW	3/4	M20	0.770	0.408	2.000	2.000	100
SPP105	PINK	25/32		0.807	0.428	1.250	1.250	100
SPP110	LIGHT GREEN	7/8		0.888	0.372	1.000	1.000	100
SPP120	YELLOW	1		1.020	0.375	0.970	1.000	100
SPP140	GREY	1-3/8		1.380	0.732	1.500	1.500	50



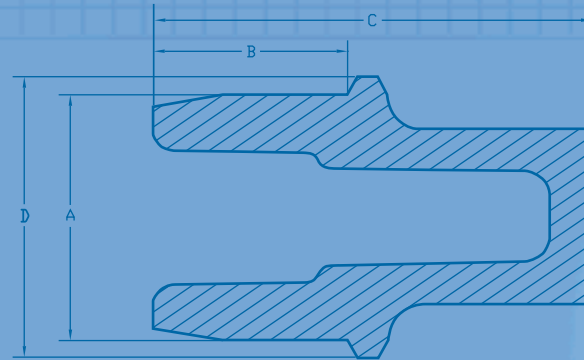
- Recommended for Powder Coating, E-Coating, Plating and Anodizing
- Plug threaded or non-threaded through holes
- Reusable
- Ultrabake™ Pull Plugs are color coded to increase visibility and to ease the job of sorting plugs after use

ULTRABAKE™ THREAD MASK



- Recommended for Powder Coating and E-coating
- Designed to mask the first thread of a threaded hole
- Sizes for metric and UNC threads
- Hollow design cools quickly for ease of removal
- Tapered to prevent liquid trapping

Part Number	Color	Dimensions (Inches)				Quantity Per Bag
		A	B	C	D	
UTM-1/4-20	YELLOW	0.218	0.200	0.450	0.260	500
UTM-5/16-18	LIGHT GREEN	0.278	0.200	0.500	0.320	500
UTM-3/8-16	WHITE	0.336	0.250	0.600	0.385	500
UTM-1/2-13	CLEAR	0.451	0.350	0.750	0.510	250
UTM-7/16-14	PINK	0.392	0.350	0.750	0.440	250
UTM-M6*1	CLEAR	0.208	0.197	0.551	0.248	500
UTM-M8*1.25	DARK BLUE	0.283	0.197	0.482	0.331	500
UTM-M10*1.5	PINK	0.358	0.276	0.630	0.409	250
UTM-M12*1.75	RUSTY RED	0.426	0.346	0.792	0.489	250
UTM-M16*2	LIGHT GREEN	0.583	0.433	0.906	0.654	100
UTM-M20*2.5	YELLOW	0.724	0.512	1.122	0.811	100



ULTRABAKE™ THREAD MASK LS

- LS (Long Series) have longer handles for hard to reach areas
- Longer sealing area

Part Number	Color	Dimensions (Inches)				Quantity Per Bag
		A	B	C	D	
UTM-1/4-20LS	YELLOW	0.218	0.279	0.922	0.260	500
UTM-1/4-36LS	DARK BLUE	0.232	0.270	0.922	0.260	500
UTM-5/16-18LS	LIGHT GREEN	0.278	0.279	0.894	0.320	500
UTM-5/16-40LS	RUSTY RED	0.296	0.279	0.894	0.320	250
UTM-3/8-16LS	WHITE	0.336	0.329	0.994	0.385	250
UTM-3/8-36LS	YELLOW	0.357	0.329	0.994	0.385	250
UTM-M3*0.5LS	RED	0.107	0.210	0.820	0.138	1000
UTM-M4*0.7LS	PINK	0.141	0.230	0.860	0.161	1000
UTM-M5*0.8LS	PURPLE	0.178	0.220	0.820	0.207	500
UTM-M6*1LS	CLEAR	0.208	0.295	0.964	0.248	500
UTM-M8*1.25LS	DARK BLUE	0.283	0.295	0.896	0.331	500
UTM-M10*1.5LS	PINK	0.358	0.276	0.945	0.409	250
UTM-M24*2LS	GREY	0.896	0.630	1.490	0.947	50

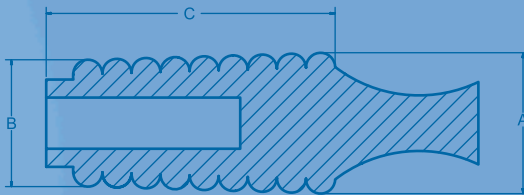
ULTRABAKE™ FLANGELESS PLUGS

600°F (315°C)

Part Number	Color	Dimensions (Inches)			Quantity Per Bag
		A	B	C	
UFP00250	CLEAR	0.230	0.157	1.000	250
UFP00312	BLACK	0.315	0.221	1.000	250
UFP00406	YELLOW	0.380	0.315	1.000	250
UFP00468	CLEAR	0.470	0.380	1.000	250
UFP00562	LIGHT BLUE	0.575	0.480	1.000	250
UFP00625	PURPLE	0.630	0.536	1.000	250
UFP00718	RUSTY RED	0.709	0.630	1.000	250
UFP00787	LIGHT GREEN	0.787	0.709	1.000	100
UFP00866	GREY	0.866	0.787	1.000	100
UFP00945	CLEAR	0.945	0.866	1.000	100
UFP01024	BLACK	1.024	0.945	1.000	100
UFP01102	DARK GREEN	1.102	1.024	1.000	100
UFP01134	PURPLE	1.147	1.063	1.000	50
UFP01178	LIGHT BLUE	1.181	1.102	1.000	50
UFP01216	RUSTY RED	1.220	1.142	1.000	50
UFP01234	YELLOW	1.256	1.181	1.000	50



- Recommended for Powder Coating, E-Coating, Plating and Anodizing
- Designed to protect threaded holes without masking the surrounding area
- The tapered design and hollow core allow a single plug to be used for different sized holes
- Color coding increases visibility and eases the job of sorting the plugs after use



E.P.D.M. FLANGELESS PLUGS

300°F (149°C)

Part Number	Dimensions (Inches)			Quantity Per Bag
	A	B	C	
FP00250	0.230	0.157	1.000	250
FP00312	0.315	0.221	1.000	250
FP00406	0.380	0.315	1.000	250
FP00468	0.470	0.380	1.000	250
FP00562	0.575	0.480	1.000	250
FP00625	0.630	0.536	1.000	250
FP00718	0.709	0.630	1.000	250
FP00787	0.787	0.709	1.000	100
FP00866	0.866	0.787	1.000	100
FP00945	0.945	0.866	1.000	100
FP01024	1.024	0.945	1.000	100
FP01102	1.102	1.024	1.000	100

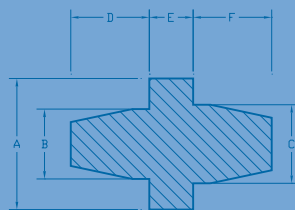
- Recommended for Plating, Anodizing and Spray-Painting
- Tapered design and hollow core allow multiple applications
- Protect threaded holes without masking the surrounding area

ULTRABAKE™ WASHER PLUGS 600°F (315°C)



- Recommended for Powder Coating, E-Coating, Anodizing, and Plating
- Ideal for masking the grounding area around threaded and through holes
- Provides a concentric mask around a hole
- Single plug can be used for 2 hole sizes
- Reusable

Part Number	Color	Dimensions (Inches)						Quantity Per Bag
		A	B	C	D	E	F	
UW-M3	DARK GREEN	0.276	0.110	0.146	0.220	0.197	0.291	1000
UW-M4	PINK	0.354	0.142	0.185	0.283	0.197	0.370	1000
UW-M5	CLEAR	0.394	0.177	0.224	0.354	0.197	0.449	1000
UW-M6	RED	0.492	0.209	0.264	0.417	0.197	0.528	500
UW-M8	BLACK	0.669	0.280	0.343	0.559	0.197	0.685	500
UW-M10	YELLOW	0.827	0.378	0.421	0.756	0.197	0.843	250
UW-M12	CLEAR	0.945	0.429	0.500	0.858	0.197	1.000	250
UW380	YELLOW	0.250	0.096	0.128	0.348	0.197	0.504	1000
UW400	BLACK	0.312	0.134	0.157	0.490	0.193	0.502	1000
UW405	CLEAR	0.319	0.124	0.252	0.385	0.217	0.511	1000
UW410	PINK	0.380	0.137	0.160	0.454	0.196	0.507	1000
UW412	RED	0.375	0.198	0.274	0.492	0.198	0.500	500
UW415	LIGHT GREEN	0.502	0.127	0.186	0.381	0.202	0.497	500
UW420	DARK BLUE	0.505	0.244	0.257	0.509	0.193	0.516	500
UW440	YELLOW	0.625	0.127	0.256	0.358	0.191	0.506	500

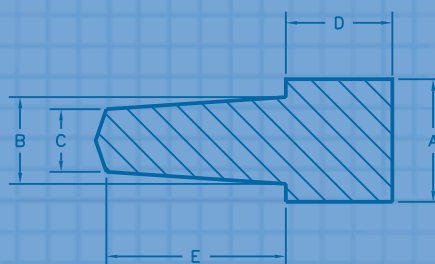


ULTRABAKE™ STEP PLUGS 600°F (315°C)



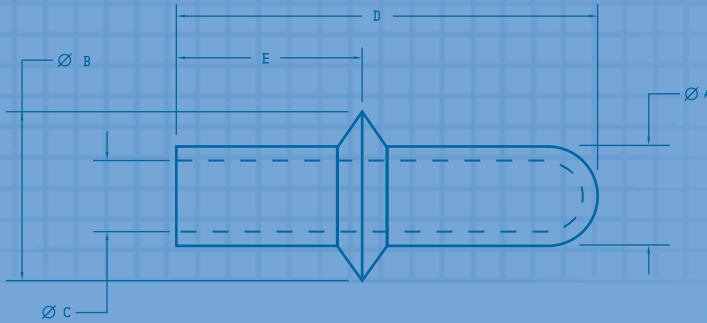
- Recommended for Powder Coating, E-Coating, Anodizing, and Plating
- Provides a clean area around diameter of hole for grounding purposes
- Color coded
- Eliminates 2-step masking
- Plugs threaded or unthreaded holes

Part Number	Color	Dimensions (Inches)					Quantity Per Bag
		A	B	C	D	E	
SP-M3	LIGHT BLUE	0.276	0.118	0.093	0.276	0.512	500
SP-M4	LIGHT GREEN	0.315	0.197	0.112	0.315	0.551	500
SP-M5	PURPLE	0.354	0.236	0.155	0.354	0.631	500
SP-M6	BLACK	0.400	0.253	0.188	0.400	0.694	250
SP-M8	WHITE	0.489	0.324	0.234	0.384	0.682	250



ULTRABAKE™ FLANGED PLUGS 600°F (315°C)

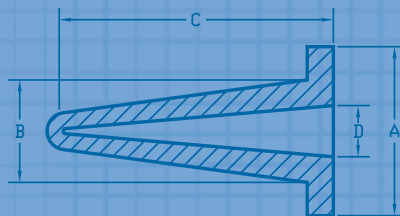
Part Number	Color	Dimensions (Inches)					Quantity Per Bag
		A	B	C	D	E	
SFP-M8	YELLOW	0.291	0.472	0.177	1.654	0.472	250
SFP-M10	PINK	0.343	0.579	0.276	1.850	0.512	250
SFP-M12	CLEAR	0.421	0.622	0.315	2.008	0.551	250
SFP-M14	GREY	0.539	0.709	0.417	2.520	0.591	250



- Ideal for Powder Coating and E-Coating
- Masks off the hole and the flange masks the first thread

ULTRABAKE™ HOLLOW WASHER PLUGS 600°F (315°C)

Part Number	Color	Dimensions (Inches)				Quantity Per Bag
		A	B	C	D	
HWP-0330	CLEAR	0.492	0.248	0.906	0.130	200
HWP-0450	BLACK	0.630	0.335	0.984	0.177	200
HWP-0500	YELLOW	0.650	0.394	1.102	0.197	200
HWP-0800	DARK BLUE	0.748	0.551	1.417	0.315	200
HWP-1150	PURPLE	0.984	0.689	1.496	0.453	200
HWP-1350	RUSTY RED	1.102	0.768	2.008	0.531	100
HWP-1480	GREY	1.000	0.819	1.929	0.583	100
HWP-1600	CLEAR	1.220	0.866	2.087	0.630	100



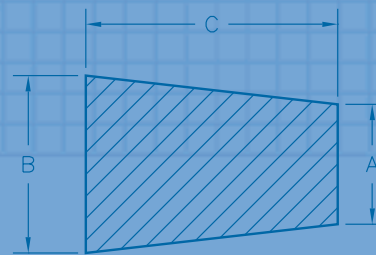
- Recommended for Powder Coating, E-Coating, Anodizing, and Plating
- Provides a concentric mask around a hole
- Ideal for masking the grounding area around threaded and through holes
- Reusable
- Can be pulled into sheet metal holes

MISCELLANEOUS ULTRABAKE™ PLUGS 600°F (315°C)



- Recommended for Powder Coating, E-Coating and Plating
- Plugs threaded or unthreaded holes
- Excellent sealing power
- Reusable
- Highly versatile

Part Number	Color	Dimensions (Inches)			Quantity Per Bag
		A	B	C	
MSP101L	DARK GREEN	0.062	0.187	0.750	1000
MSP102L	YELLOW	0.125	0.250	1.000	1000
MSP103L	CLEAR	0.187	0.343	1.000	1000
MSP104L	RED	0.250	0.437	1.000	1000
MSP105L	WHITE	0.316	0.557	1.000	500
MSP106L	PINK	0.437	0.687	1.000	500
MSP107L	CLEAR	0.562	0.750	1.000	250
MSP108L	CLEAR	0.625	0.800	1.000	250
MSP109L	CLEAR	0.750	0.925	1.000	250



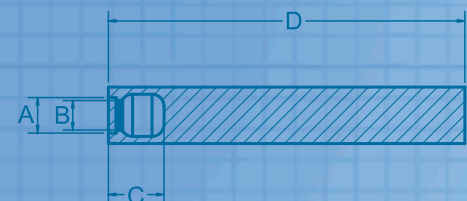
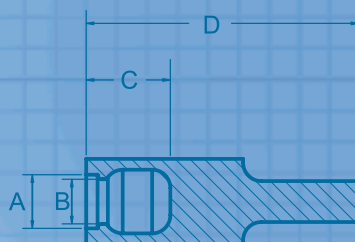
Part Number	Temp Limit	Dimensions (Inches)			Quantity Per Bag
		A	B	C	
MPP-UB	600°F (315°C)	0.125	0.375	1.250	500
MPP-BR	150°F (65°C)	0.125	0.375	1.250	500
MPP-SP	600°F (315°C)	0.125	0.500	2.000	500
MPP-GN	350°F (177°C)	0.125	0.500	2.000	500

ULTRABAKE™ ZERK CAPS 600°F (315°C)



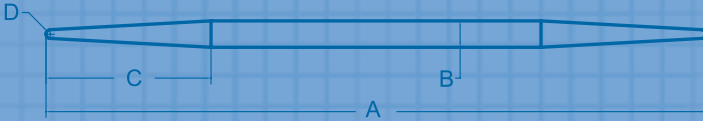
- Designed to mask a variety of grease fittings in powder coating, E-Coating or wet painting applications

Part Number	Material	Color	Dimensions (Inches)				Quantity Per Bag
			A	B	C	D	
ZC-S	Ultrabake™	BLUE	0.232	0.193	0.364	1.179	500
ZC-L	Ultrabake™	RUSTY RED	0.232	0.193	0.364	2.333	250
ZC-S-N	Neoprene	GREEN	0.232	0.193	0.364	1.179	500
ZC-L-N	Neoprene	GREEN	0.232	0.193	0.364	2.333	250



MOUSE TAIL PLUGS

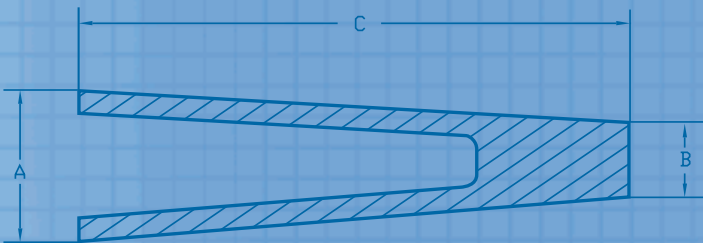
Part Number	Dimensions (Inches)				Material	Quantity Per Bag
	A	B	C	D		
SMT100	2.000	0.080	0.500	0.025	Ultrabake	500
MT100	2.000	0.080	0.500	0.025	EPDM	500



- Ideal for small holes
- Stretches to provide leakproof seal
- Reusable

ULTRABAKE™ HOLLOW CONE PLUGS 600°F (315°C)

Part Number	Color	Dimensions (Inches)			Quantity Per Bag
		A	B	C	
UHCP-1	RUSTY RED	0.580	0.147	1.900	250
UHCP-2	BLUE	0.787	0.394	2.900	100



- Recommended for Powder Coating, E-Coating, Anodizing, and Plating
- Ideal for slotted and oval holes
- Hollow configuration and tapered design makes this plug highly versatile

ULTRABAKE™ SHEETING

600°F (315°C)



We die-cut our sheeting to your specific requirements

- Recommended for Powder Coating, E-Coating, Plating and Anodizing
- Sheeting can be used for gaskets, pads, strips washers and seals
- Reusable and very durable

Part Number	Size (Inches)		
	Length/Width		Thickness
US031-36	36 square	0.031	1/32
US062-36	36 square	0.062	1/16
US093-36	36 square	0.093	3/32
US125-36	36 square	0.125	1/8
US187-36	36 square	0.187	3/16
US250-36	36 square	0.250	1/4
US375-36	36 square	0.375	3/8
US500-36	36 square	0.500	1/2

ULTRABAKE™ CORD

600°F (315°C)



- Recommended for Powder Coating, E-Coating, Plating and Anodizing
- Ideal for slots and through holes
- Flexible
- Cut to size
- Reusable

Part Number	Diameter (Inches)	Coil Length (Feet)
UC0070	0.070	100
UC0093	0.093	100
UC0103	0.103	100
UC0125	0.125	100
UC0139	0.139	100
UC0156	0.156	100
UC0187	0.187	100
UC0210	0.210	100
UC0250	0.250	100
UC0275	0.275	100
UC0312	0.312	100
UC0375	0.375	50
UC0437	0.437	50
UC0500	0.500	50
UC0562	0.562	50

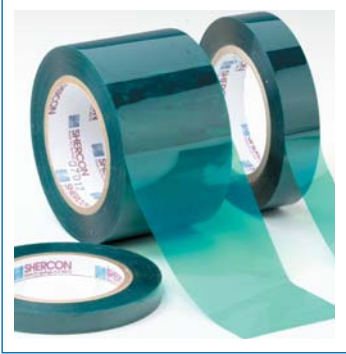
ULTRABAKE™ TUBING 600°F (315°C)

Part Number	I.D. (Inches)	O.D. (Inches)	Coil Length (Feet)
ST0040	0.040	0.165	100
ST0062	0.062	0.187	100
ST0080	0.080	0.205	100
ST0093	0.093	0.218	100
ST0109	0.109	0.234	100
ST0125	0.125	0.250	100
ST0140	0.140	0.265	100
ST0156	0.156	0.281	100
ST0172	0.172	0.297	100
ST0187	0.187	0.312	100
ST0203	0.203	0.328	100
ST0218	0.218	0.343	100
ST0234	0.234	0.359	100
ST0250	0.250	0.375	100
ST0281	0.281	0.406	100
ST0312	0.312	0.437	100
ST0343	0.343	0.468	100
ST0375	0.375	0.500	100
ST0406	0.406	0.531	100
ST0437	0.437	0.562	100
ST0500	0.500	0.625	100
ST0625	0.625	0.750	50
ST0750	0.750	0.875	50
ST0875	0.875	1.000	50
ST0937	0.937	1.062	50
ST1000	1.000	1.125	50
ST1125	1.125	1.250	50
ST1250	1.250	1.375	50
ST1375	1.375	1.500	50
ST1500	1.500	1.625	50
ST1625	1.625	1.750	50
ST1750	1.750	1.875	50
ST1875	1.875	2.000	50
ST2000	2.000	2.125	50



- Recommended for Powder Coating, E-Coating, Plating and Anodizing
- 1/16" wall thickness
- Ideal for round tubing stock, long studs and pins
- Flexible
- Reusable
- Extremely versatile – cut to size

PC21 GREEN TAPE 400°F (204°C)



- Recommended for Powder Coating, E-Coating and Anodizing
- Clean removal, no adhesive residue
- 2 mil. polyester, 1.5 mil. silicone adhesive
- Increased stiffness for ease of application
- Custom widths shipped same day
- See page 34 for discs

Part Number	Size (Inches)	Rolls Per Case
PC21-0125	1/8 x 72 YDS	144
PC21-0187	3/16 x 72 YDS	144
PC21-0250	1/4 x 72 YDS	144
PC21-0312	5/16 x 72 YDS	96
PC21-0375	3/8 x 72 YDS	96
PC21-0437	7/16 x 72 YDS	72
PC21-0500	1/2 x 72 YDS	72
PC21-0625	5/8 x 72 YDS	48
PC21-0750	3/4 x 72 YDS	48
PC21-0875	7/8 x 72 YDS	36
PC21-1000	1 x 72 YDS	36
PC21-1250	1-1/4 x 72 YDS	24
PC21-1500	1-1/2 x 72 YDS	24
PC21-1750	1-3/4 x 72 YDS	24
PC21-2000	2 x 72 YDS	24
PC21-2500	2-1/2 x 72 YDS	12
PC21-3000	3 x 72 YDS	12
PC21-3500	3-1/2 x 72 YDS	8
PC21-4000	4 x 72 YDS	8
PC21-4500	4-1/2 x 72 YDS	8
PC21-5000	5 x 72 YDS	8
PC21-5500	5-1/2 x 72 YDS	8
PC21-6000	6 x 72 YDS	8
PC21-7000	7 x 72 YDS	4
PC21-8000	8 x 72 YDS	4

Part Number	Size (MM)	Rolls Per Case
PC21-5MM	5mm x 33m	144
PC21-10MM	10mm x 66m	96
PC21-15MM	15mm x 66m	72
PC21-20MM	20mm x 66m	48
PC21-25MM	25mm x 66m	48
PC21-30MM	30mm x 66m	36
PC21-40MM	40mm x 66m	24
PC21-45MM	45mm x 66m	24
PC21-50MM	50mm x 66m	12
PC21-80MM	80mm x 66m	8
PC21-100MM	100mm x 66m	8
PC21-150MM	150mm x 66m	8

PC30 YELLOW TAPE 400°F (204°C)

Part Number	Size (Inches)	Rolls Per Case
PC30-0125	1/8 x 72 YDS	144
PC30-0187	3/16 x 72 YDS	144
PC30-0250	1/4 x 72 YDS	144
PC30-0312	5/16 x 72 YDS	96
PC30-0375	3/8 x 72 YDS	96
PC30-0437	7/16 x 72 YDS	72
PC30-0500	1/2 x 72 YDS	72
PC30-0625	5/8 x 72 YDS	48
PC30-0750	3/4 x 72 YDS	48
PC30-0875	7/8 x 72 YDS	36
PC30-1000	1 x 72 YDS	36
PC30-1250	1-1/4 x 72 YDS	24
PC30-1500	1-1/2 x 72 YDS	24
PC30-1750	1-3/4 x 72 YDS	24
PC30-2000	2 x 72 YDS	24
PC30-2500	2-1/2 x 72 YDS	12
PC30-3000	3 x 72 YDS	12
PC30-3500	3-1/2 x 72 YDS	8
PC30-4000	4 x 72 YDS	8
PC30-4500	4-1/2 x 72 YDS	8
PC30-5000	5 x 72 YDS	8
PC30-5500	5-1/2 x 72 YDS	8
PC30-6000	6 x 72 YDS	8
PC30-7000	7 x 72 YDS	4
PC30-8000	8 x 72 YDS	4

Part Number	Size (MM)	Rolls Per Case
PC30-5MM	5mm x 33m	144
PC30-10MM	10mm x 66m	96
PC30-15MM	15mm x 66m	72
PC30-20MM	20mm x 66m	48
PC30-25MM	25mm x 66m	48
PC30-30MM	30mm x 66m	36
PC30-40MM	40mm x 66m	24
PC30-45MM	45mm x 66m	24
PC30-50MM	50mm x 66m	12
PC30-80MM	80mm x 66m	8
PC30-100MM	100mm x 66m	8
PC30-150MM	150mm x 66m	8



- Recommended for Powder Coating applications
- Clean removal with no adhesive residue
- 2 mil. polyester, 1.5 mil. silicone adhesive
- Custom widths shipped same day

PC11 RED TAPE 425°F (220°C)



- Recommended for Powder Coating and E-Coating applications
- Ideal for high temperature requirements
- 2 mil. polyester, 1.5 mil. silicone adhesive
- See page 36 for discs

Part Number	Size (Inches)	Rolls Per Case
PC11-0250	1/4 x 36 YDS	144
PC11-0375	3/8 x 72 YDS	96
PC11-0500	1/2 x 72 YDS	72
PC11-0625	5/8 x 72 YDS	48
PC11-0750	3/4 x 72 YDS	48
PC11-1000	1 x 72 YDS	36
PC11-1250	1-1/4 x 72 YDS	24
PC11-1500	1-1/2 x 72 YDS	24
PC11-1750	1-3/4 x 72 YDS	24
PC11-2000	2 x 72 YDS	24
PC11-3000	3 x 72 YDS	12
PC11-4000	4 x 72 YDS	8
PC11-5000	5 x 72 YDS	8
PC11-6000	6 x 72 YDS	8

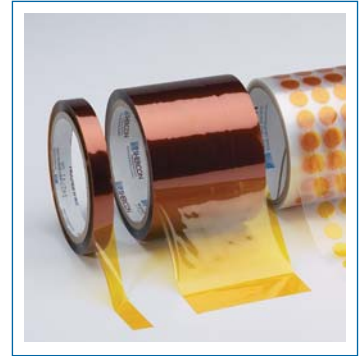
PC90 BLUE TAPE 400°F (204°C)

- Recommended for Powder Coating and E-Coating applications
- Best suited for curved surfaces
- 1 mil. polyester, 2 mil. silicone adhesive
- See page 37 for discs

Part Number	Size (Inches)	Rolls Per Case
PC90-0250	1/4 x 72 YDS	144
PC90-0375	3/8 x 72 YDS	96
PC90-0500	1/2 x 72 YDS	72
PC90-0625	5/8 x 72 YDS	48
PC90-0750	3/4 x 72 YDS	48
PC90-1000	1 x 72 YDS	36
PC90-1250	1-1/4 x 72 YDS	24
PC90-1500	1-1/2 x 72 YDS	24
PC90-1750	1-3/4 x 72 YDS	24
PC90-2000	2 x 72 YDS	24
PC90-3000	3 x 72 YDS	12
PC90-4000	4 x 72 YDS	8
PC90-5000	5 x 72 YDS	8
PC90-6000	6 x 72 YDS	8

22 POLYIMIDE TAPE 500°F (260°C)

Part Number	Size (Inches)	Rolls Per Case
22-0125	1/8 x 36 YDS	36
22-0250	1/4 x 36 YDS	36
22-0375	3/8 x 36 YDS	24
22-0500	1/2 x 36 YDS	18
22-0625	5/8 x 36 YDS	12
22-0750	3/4 x 36 YDS	12
22-1000	1 x 36 YDS	12
22-1250	1-1/4 x 36 YDS	9
22-1500	1-1/2 x 36 YDS	6
22-2000	2 x 36 YDS	6
22-2500	2-1/2 x 36 YDS	4
22-3000	3 x 36 YDS	4
22-4000	4 x 36 YDS	4
22-6000	6 x 36 YDS	2



- Recommended for high-temp powder coating and for masking gold leaves of PCB during wave soldering
- 1 mil. film, 1.5 mil. adhesive
- See page 38 for discs

PC198 GLASS CLOTH TAPE 500°F (260°C)

Part Number	Size (Inches)	Rolls Per Case
PC198-0125	1/8 x 36 YDS	36
PC198-0250	1/4 x 36 YDS	36
PC198-0375	3/8 x 36 YDS	24
PC198-0500	1/2 x 36 YDS	18
PC198-0625	5/8 x 36 YDS	12
PC198-0750	3/4 x 36 YDS	12
PC198-1000	1 x 36 YDS	12
PC198-1250	1-1/4 x 36 YDS	9
PC198-1500	1-1/2 x 36 YDS	6
PC198-2000	2 x 36 YDS	6
PC198-2500	2-1/2 x 36 YDS	4
PC198-3000	3 x 36 YDS	4
PC198-4000	4 x 36 YDS	4
PC198-6000	6 x 36 YDS	2



- Recommended for thermal spray and high-temp powder coating
- Abrasion resistant
- Excellent resistance to solvents
- Flame retardant
- Excellent tensile strength
- See page 39 for discs

KD11 MASKING TAPE 300°F (149°C)



- High quality, high heat resistance
- Clean removal (no residue)
- Custom widths shipped same day
- See page 41 for discs

Part Number	Size (Inches)	Rolls Per Case
KD11-0250	1/4 X 60 YDS	144
KD11-0375	3/8 X 60 YDS	96
KD11-0500	1/2 X 60 YDS	72
KD11-0750	3/4 X 60 YDS	48
KD11-1000	1 X 60 YDS	36
KD11-1500	1-1/2 X 60 YDS	24
KD11-2000	2 X 60 YDS	24
KD11-3000	3 X 60 YDS	12
KD11-4000	4 X 60 YDS	8
KD11-6000	6 X 60 YDS	8

SILICONE RUBBER TAPE 600°F (315°C)



- Recommended for Powder Coating, E-Coating and Anodizing
- Self-adhering and self-fusing
- Improved wrapping tape suitable whenever a tough, permanently resilient, void free insulation is required

Part Number	Color	Width (Inches)	Thickness (MM)	Length (Feet)
SRT0750-20	BLACK	0.750	20	36
SRT1000-20	GREY	1.000	20	36
SRT1000-30	ORANGE	1.000	30	36
SRT1500-20	RED	1.500	20	36
SRT1500-30	BLUE	1.500	30	36
SRT1750-20	GREEN	1.750	20	36
SRT2000-20	YELLOW	2.000	20	36
SRT2000-30	WHITE	2.000	30	36
SRT0753-10R	RED	0.750	10	54
SRT0753-20R	BLUE	0.750	20	36

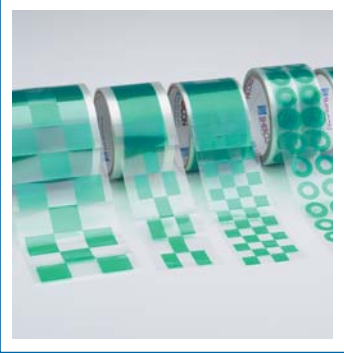
POWDER PEEL GREEN DISCS 400°F (204°C)

Part Number	Diameter (Inches)		Quantity Per Roll
	Fraction	Decimal	
PC00125	1/8	0.125	2000
PC00187	3/16	0.187	2000
PC00250	1/4	0.250	2000
PC00312	5/16	0.312	2000
PC00375	3/8	0.375	2000
PC00437	7/16	0.437	2000
PC00500	1/2	0.500	2000
PC00562	9/16	0.562	2000
PC00625	5/8	0.625	2000
PC00687	11/16	0.687	1000
PC00750	3/4	0.750	1000
PC00812	13/16	0.812	1000
PC00875	7/8	0.875	500
PC00937	15/16	0.937	500
PC01000	1	1.000	500
PC01062	1-1/16	1.062	500
PC01125	1-1/8	1.125	500
PC01187	1-3/16	1.187	500
PC01250	1-1/4	1.250	500
PC01312	1-5/16	1.312	500
PC01375	1-3/8	1.375	500
PC01437	1-7/16	1.437	500
PC01500	1-1/2	1.500	500
PC01562	1-9/16	1.562	500
PC01625	1-5/8	1.625	250
PC01687	1-11/16	1.687	250
PC01750	1-3/4	1.750	250
PC01812	1-13/16	1.812	250
PC01875	1-7/8	1.875	250
PC01937	1-15/16	1.937	250
PC02000	2	2.000	100
PC02250	2-1/4	2.250	100
PC02500	2-1/2	2.500	100
PC02750	2-3/4	2.750	100
PC03000	3	3.000	100
PC03250	3-1/4	3.250	100
PC03500	3-1/2	3.500	100
PC03750	3-3/4	3.750	100
PC04000	4	4.000	100
PC04250	4-1/4	4.250	100
PC04500	4-1/2	4.500	100
PC04750	4-3/4	4.750	100
PC05000	5	5.000	100
PC05250	5-1/4	5.250	100
PC05500	5-1/2	5.500	100
PC05750	5-3/4	5.750	100
PC06000	6	6.000	100



- Recommended for Powder Coating and E-Coating
- Clean removal with no adhesive residue
- Additional sizes available – call for pricing

POWDER COATING DONUTS 400°F (204°C)



Part Number	I.D. (Inches)	O.D. (Inches)	Quantity Per Roll
PCD 125x500	0.125	0.500	1000
PCD 187x500	0.187	0.500	1000
PCD 250x500	0.250	0.500	1000
PCD 250x750	0.250	0.750	1000
PCD 125x312	0.125	0.312	1000
PCD 156x375	0.156	0.562	1000
PCD 250x562	0.250	0.562	1000
PCD 281x625	0.281	0.625	1000
PCD 375x875	0.375	0.875	1000
PCD 406x812	0.406	0.812	1000
PCD 500x1250	0.500	1.250	500
PCD 562x1375	0.562	1.375	500

POWDER COATING SQUARES 400°F (204°C)

- Custom die-cut donuts, squares and rectangles are now available from stock
- These items are ideal for Powder Coating and E-Coating
- Call for a fast quote on custom sizes

Part Number	Length (Inches)	Width (Inches)	Quantity Per Roll
PC 0250 SQ	0.250	0.250	1000
PC 0375 SQ	0.375	0.375	1000
PC 0500 SQ	0.500	0.500	1000
PC 0625 SQ	0.625	0.625	1000
PC 0750 SQ	0.750	0.750	1000
PC 01000 SQ	1.000	1.000	500
PC 01500 SQ	1.500	1.500	500

POWDER COATING RECTANGLES 400°F (204°C)

Part Number	Length (Inches)	Width (Inches)	Quantity Per Roll
PC 250x500 RT	0.250	0.500	1000
PC 250x750 RT	0.250	0.750	1000
PC 250x1000 RT	0.250	1.000	1000
PC 500x750 RT	0.500	0.750	1000
PC 500x1000 RT	0.500	1.000	1000
PC 750x1000 RT	0.750	1.000	500

POWDER PEEL RED DISCS

425°F (220°C)

Part Number	Diameter (Inches)		Quantity Per Roll
	Fraction	Decimal	
PR00125	1/8	0.125	2000
PR00187	3/16	0.187	2000
PR00250	1/4	0.250	2000
PR00312	5/16	0.312	2000
PR00375	3/8	0.375	2000
PR00437	7/16	0.437	2000
PR00500	1/2	0.500	2000
PR00562	9/16	0.562	2000
PR00625	5/8	0.625	2000
PR00687	11/16	0.687	1000
PR00750	3/4	0.750	1000
PR00812	13/16	0.812	1000
PR00875	7/8	0.875	500
PR00937	15/16	0.937	500
PR01000	1	1.000	500
PR01062	1-1/16	1.062	500
PR01125	1-1/8	1.125	500
PR01187	1-3/16	1.187	500
PR01250	1-1/4	1.250	500
PR01312	1-5/16	1.312	500
PR01375	1-3/8	1.375	500
PR01437	1-7/16	1.437	500
PR01500	1-1/2	1.500	500
PR01562	1-9/16	1.562	500
PR01625	1-5/8	1.625	250
PR01687	1-11/16	1.687	250
PR01750	1-3/4	1.750	250
PR01812	1-13/16	1.812	250
PR01875	1-7/8	1.875	250
PR01937	1-15/16	1.937	250
PR02000	2	2.000	100
PR02250	2-1/4	2.250	100
PR02500	2-1/2	2.500	100
PR02750	2-3/4	2.750	100
PR03000	3	3.000	100
PR03250	3-1/4	3.250	100
PR03500	3-1/2	3.500	100
PR03750	3-3/4	3.750	100
PR04000	4	4.000	100
PR04250	4-1/4	4.250	100
PR04500	4-1/2	4.500	100
PR04750	4-3/4	4.750	100
PR05000	5	5.000	100
PR05250	5-1/4	5.250	100
PR05500	5-1/2	5.500	100
PR05750	5-3/4	5.750	100
PR06000	6	6.000	100



- Recommended for Powder Coating and E-Coating
- Clean removal with no adhesive residue
- Additional sizes available – call for pricing

POWDER PEEL BLUE DISCS 400°F (204°C)

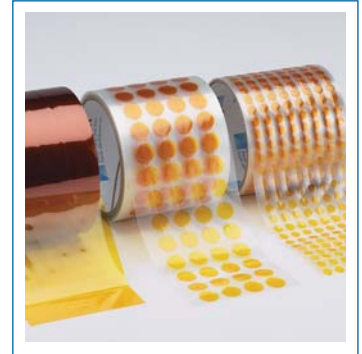


- Recommended for Powder Coating and E-Coating
- Clean removal with no adhesive residue
- Additional sizes available – call for pricing

Part Number	Diameter (Inches)		Quantity Per Roll
	Fraction	Decimal	
PB00125	1/8	0.125	2000
PB00187	3/16	0.187	2000
PB00250	1/4	0.250	2000
PB00312	5/16	0.312	2000
PB00375	3/8	0.375	2000
PB00437	7/16	0.437	2000
PB00500	1/2	0.500	2000
PB00562	9/16	0.562	2000
PB00625	5/8	0.625	2000
PB00687	11/16	0.687	1000
PB00750	3/4	0.750	1000
PB00812	13/16	0.812	1000
PB00875	7/8	0.875	500
PB00937	15/16	0.937	500
PB01000	1	1.000	500
PB01062	1-1/16	1.062	500
PB01125	1-1/8	1.125	500
PB01187	1-3/16	1.187	500
PB01250	1-1/4	1.250	500
PB01312	1-5/16	1.312	500
PB01375	1-3/8	1.375	500
PB01437	1-7/16	1.437	500
PB01500	1-1/2	1.500	500
PB01562	1-9/16	1.562	500
PB01625	1-5/8	1.625	250
PB01687	1-11/16	1.687	250
PB01750	1-3/4	1.750	250
PB01812	1-13/16	1.812	250
PB01875	1-7/8	1.875	250
PB01937	1-15/16	1.937	250
PB02000	2	2.000	100
PB02250	2-1/4	2.250	100
PB02500	2-1/2	2.500	100
PB02750	2-3/4	2.750	100
PB03000	3	3.000	100
PB03250	3-1/4	3.250	100
PB03500	3-1/2	3.500	100
PB03750	3-3/4	3.750	100
PB04000	4	4.000	100
PB04250	4-1/4	4.250	100
PB04500	4-1/2	4.500	100
PB04750	4-3/4	4.750	100
PB05000	5	5.000	100
PB05250	5-1/4	5.250	100
PB05500	5-1/2	5.500	100
PB05750	5-3/4	5.750	100
PB06000	6	6.000	100

POLYIMIDE DISCS 500°F (260°C)

Part Number	Diameter (Inches)		Quantity Per Roll
	Fraction	Decimal	
KP00125	1/8	0.125	2000
KP00187	3/16	0.187	2000
KP00250	1/4	0.250	2000
KP00312	5/16	0.312	2000
KP00375	3/8	0.375	2000
KP00437	7/16	0.437	2000
KP00500	1/2	0.500	2000
KP00562	9/16	0.562	2000
KP00625	5/8	0.625	2000
KP00687	11/16	0.687	1000
KP00750	3/4	0.750	1000
KP00812	13/16	0.812	1000
KP00875	7/8	0.875	500
KP00937	15/16	0.937	500
KP01000	1	1.000	500
KP01062	1-1/16	1.062	500
KP01125	1-1/8	1.125	500
KP01187	1-3/16	1.187	500
KP01250	1-1/4	1.250	500
KP01312	1-5/16	1.312	500
KP01375	1-3/8	1.375	500
KP01437	1-7/16	1.437	500
KP01500	1-1/2	1.500	500
KP01562	1-9/16	1.562	500
KP01625	1-5/8	1.625	250
KP01687	1-11/16	1.687	250
KP01750	1-3/4	1.750	250
KP01812	1-13/16	1.812	250
KP01875	1-7/8	1.875	250
KP01937	1-15/16	1.937	250
KP02000	2	2.000	100
KP02250	2-1/4	2.250	100
KP02500	2-1/2	2.500	100
KP02750	2-3/4	2.750	100
KP03000	3	3.000	100
KP03250	3-1/4	3.250	100
KP03500	3-1/2	3.500	100
KP03750	3-3/4	3.750	100
KP04000	4	4.000	100
KP04250	4-1/4	4.250	100
KP04500	4-1/2	4.500	100
KP04750	4-3/4	4.750	100
KP05000	5	5.000	100
KP05250	5-1/4	5.250	100
KP05500	5-1/2	5.500	100
KP05750	5-3/4	5.750	100
KP06000	6	6.000	100



- Recommended for high-temp powder coating and masking gold leaves of PCB during wave soldering
- Offers optimum performance in thermal insulation
- Offers flame resistant electrical insulation

GLASS CLOTH DISCS 500°F (260°C)



- Recommended for thermal spray and high-temp powder coating
- Resistant to high-pressure blasting
- Abrasion resistant
- Excellent resistance to solvents
- Flame retardant
- Excellent tensile strength

Part Number	Diameter (Inches)		Quantity Per Roll
	Fraction	Decimal	
GC00125	1/8	0.125	2000
GC00187	3/16	0.187	2000
GC00250	1/4	0.250	2000
GC00312	5/16	0.312	2000
GC00375	3/8	0.375	2000
GC00437	7/16	0.437	2000
GC00500	1/2	0.500	2000
GC00562	9/16	0.562	2000
GC00625	5/8	0.625	2000
GC00687	11/16	0.687	1000
GC00750	3/4	0.750	1000
GC00812	13/16	0.812	1000
GC00875	7/8	0.875	500
GC00937	15/16	0.937	500
GC01000	1	1.000	500
GC01062	1-1/16	1.062	500
GC01125	1-1/8	1.125	500
GC01187	1-3/16	1.187	500
GC01250	1-1/4	1.250	500
GC01312	1-5/16	1.312	500
GC01375	1-3/8	1.375	500
GC01437	1-7/16	1.437	500
GC01500	1-1/2	1.500	500
GC01562	1-9/16	1.562	500
GC01625	1-5/8	1.625	500
GC01687	1-11/16	1.687	500
GC01750	1-3/4	1.750	500
GC01812	1-13/16	1.812	500
GC01875	1-7/8	1.875	500
GC01937	1-15/16	1.937	500
GC02000	2	2.000	500

E-Z PEEL™ DISCS

200°F (93°C)

Part Number	Diameter (Inches)		Quantity Per Roll
	Fraction	Decimal	
EZ00093	3/32	0.093	1000
EZ00125	1/8	0.125	5000
EZ00156	5/32	0.156	1000
EZ00187	3/16	0.187	5000
EZ00218	7/32	0.218	1000
EZ00250	1/4	0.250	5000
EZ00281	9/32	0.281	1000
EZ00312	5/16	0.312	5000
EZ00343	11/32	0.343	1000
EZ00375	3/8	0.375	5000
EZ00406	13/32	0.406	1000
EZ00437	7/16	0.437	5000
EZ00468	15/32	0.468	1000
EZ00500	1/2	0.500	5000
EZ00531	17/32	0.531	1000
EZ00562	9/16	0.562	5000
EZ00594	19/32	0.594	1000
EZ00625	5/8	0.625	5000
EZ00656	21/32	0.656	1000
EZ00687	11/16	0.687	4000
EZ00719	23/32	0.719	1000
EZ00750	3/4	0.750	4000
EZ00812	13/16	0.812	4000
EZ00875	7/8	0.875	2000
EZ00937	15/16	0.937	2000
EZ01000	1	1.000	2000
EZ01062	1-1/16	1.062	2000
EZ01125	1-1/8	1.125	2000
EZ01187	1-3/16	1.187	2000
EZ01250	1-1/4	1.250	2000
EZ01312	1-5/16	1.312	2000
EZ01375	1-3/8	1.375	2000
EZ01437	1-7/16	1.437	2000
EZ01500	1-1/2	1.500	2000
EZ01562	1-9/16	1.562	2000
EZ01625	1-5/8	1.625	1000
EZ01687	1-11/16	1.687	1000
EZ01750	1-3/4	1.750	1000
EZ01812	1-13/16	1.812	1000
EZ01875	1-7/8	1.875	1000
EZ01937	1-15/16	1.937	1000
EZ02000	2	2.000	500
EZ02125	2-1/8	2.125	500
EZ02250	2-1/4	2.250	500
EZ02375	2-3/8	2.375	500
EZ02500	2-1/2	2.500	500
EZ02625	2-5/8	2.625	500
EZ02750	2-3/4	2.750	500
EZ02875	2-7/8	2.875	500
EZ03000	3	3.000	500
EZ03250	3-1/4	3.250	500
EZ03500	3-1/2	3.500	500
EZ03750	3-3/4	3.750	500
EZ04000	4	4.000	250
EZ04250	4-1/4	4.250	250
EZ04500	4-1/2	4.500	250
EZ04750	4-3/4	4.750	250
EZ05000	5	5.000	250
EZ05250	5-1/4	5.250	250
EZ05500	5-1/2	5.500	250
EZ05750	5-3/4	5.750	250
EZ06000	6	6.000	250



- High quality, high heat resistance
- Wide variety of applications
- Clean removal (no residue)

KWIKY DOT™ DISCS

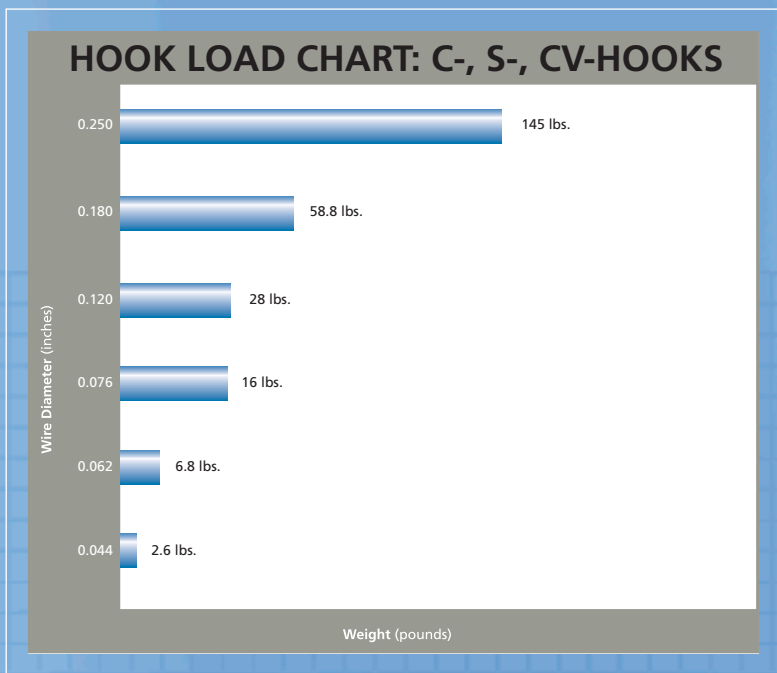
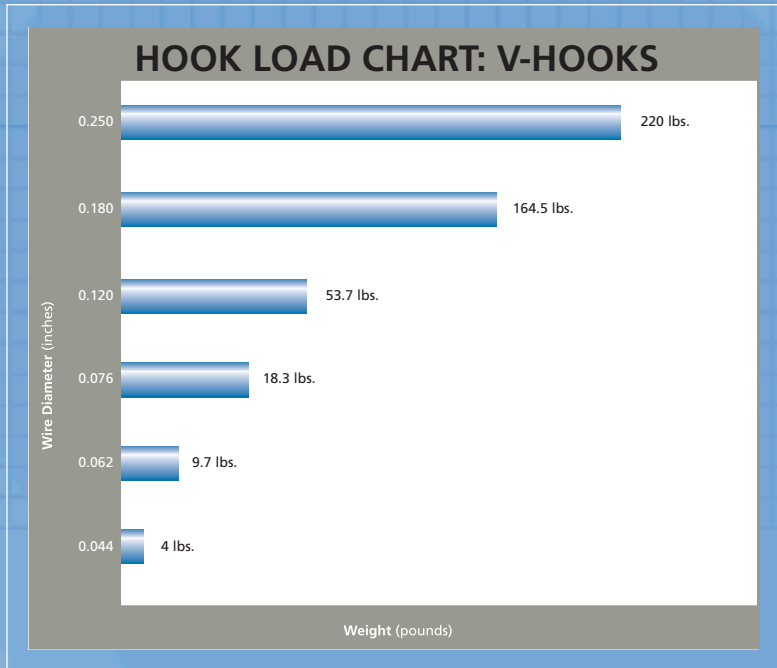
300°F (149°C)



- High quality, high heat resistance
- Wide variety of applications
- Clean removal (no residue)
- Overlapped from 3/16" to 1" for rapid application

Part Number	Diameter (Inches)		Quantity Per Roll
	Fraction	Decimal	
KD00093	3/32	0.093	1000
KD00125	1/8	0.125	5000
KD00156	5/32	0.156	1000
KD00187	3/16	0.187	5000
KD00218	7/32	0.218	1000
KD00250	1/4	0.250	5000
KD00281	9/32	0.281	1000
KD00312	5/16	0.312	5000
KD00343	11/32	0.343	1000
KD00375	3/8	0.375	5000
KD00406	13/32	0.406	1000
KD00437	7/16	0.437	5000
KD00468	15/32	0.468	1000
KD00500	1/2	0.500	5000
KD00531	17/32	0.531	1000
KD00562	9/16	0.562	5000
KD00594	19/32	0.594	1000
KD00625	5/8	0.625	5000
KD00656	21/32	0.656	1000
KD00687	11/16	0.687	4000
KD00719	23/32	0.719	1000
KD00750	3/4	0.750	4000
KD00812	13/16	0.812	4000
KD00875	7/8	0.875	2000
KD00937	15/16	0.937	2000
KD01000	1	1.000	2000
KD01062	1-1/16	1.062	2000
KD01125	1-1/8	1.125	2000
KD01187	1-3/16	1.187	2000
KD01250	1-1/4	1.250	2000
KD01312	1-5/16	1.312	2000
KD01375	1-3/8	1.375	2000
KD01437	1-7/16	1.437	2000
KD01500	1-1/2	1.500	2000
KD01562	1-9/16	1.562	2000
KD01625	1-5/8	1.625	1000
KD01687	1-11/16	1.687	1000
KD01750	1-3/4	1.750	1000
KD01812	1-13/16	1.812	1000
KD01875	1-7/8	1.875	1000
KD01937	1-15/16	1.937	1000
KD02000	2	2.000	500
KD02125	2-1/8	2.125	500
KD02250	2-1/4	2.250	500
KD02375	2-3/8	2.375	500
KD02500	2-1/2	2.500	500
KD02625	2-5/8	2.625	500
KD02750	2-3/4	2.750	500
KD02875	2-7/8	2.875	500
KD03000	3	3.000	500
KD03250	3-1/4	3.250	500
KD03500	3-1/2	3.500	500
KD03750	3-3/4	3.750	500
KD04000	4	4.000	250
KD04250	4-1/4	4.250	250
KD04500	4-1/2	4.500	250
KD04750	4-3/4	4.750	250
KD05000	5	5.000	250
KD05250	5-1/4	5.250	250
KD05500	5-1/2	5.500	250
KD05750	5-3/4	5.750	250
KD06000	6	6.000	250

HOOK LOAD CHART

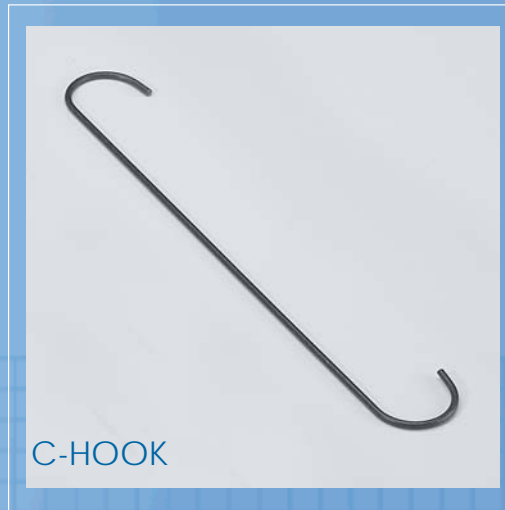


This load data was compiled under static load conditions in a laboratory and is given for reference only. The actual dynamic load capacity will vary. It is the Customer's obligation to determine whether the actual dynamic load capacity is suitable for the Customer's purpose.

V-HOOKS, S-HOOKS, C-HOOKS AND CV-HOOKS



- Solid metal to metal contact
- Consistent grounding
- Minimal hook mark
- High load capacity (see load chart)
- Other angles available on request
- Low minimums – 1 bag
- Custom hook samples in 2 days
- High strength spring steel
- Custom angles available
- Custom lengths available



V-HOOKS, S-HOOKS, C-HOOKS AND CV-HOOKS

V-HOOK	S-HOOK	C-HOOK	CV-HOOK	Wire Dia. (Inches)	Length (Inches)	Angle	Qty Per Bag
V-044-2			CV-044-2	0.044	2		1000
V-062-2.5			CV-062-2	0.062	2/2.500		1000
V-062-2.5-90				0.062	2.500	90	1000
V-076-2.5			CV-076-2	0.076	2/2.500		1000
V-044-3	S-044-3	C-044-3	CV-044-3	0.044	3		1000
V-062-3	S-062-3	C-062-3		0.062	3		1000
V-062-3-90		C-062-3-90		0.062	3	90	1000
V-076-3	S-076-3	C-076-3		0.076	3		1000
V-044-4		C-044-4		0.044	4		1000
V-062-4	S-062-4	C-062-4	CV-062-4	0.062	4		1000
V-062-4-90		C-062-4-90		0.062	4	90	1000
V-076-4	S-076-4	C-076-4	CV-076-4	0.076	4		1000
V-076-4-90				0.076	4	90	1000
V-120-4			CV-120-4	0.120	4		1000
V-120-4-90				0.120	4	90	1000
V-180-4			CV-180-4	0.180	4		1000
V-180-5	S-180-5			0.180	5		1000
V-062-6	S-062-6	C-062-6	CV-062-6	0.062	6		1000
V-062-6-90				0.062	6	90	1000
V-076-6	S-076-6	C-076-6	CV-076-6	0.076	6		1000
V-076-6-90				0.076	6	90	1000
V-120-6	S-120-6	C-120-6	CV-120-6	0.120	6		1000
V-076-7			CV-076-7	0.076	7		1000
V-076-7-90				0.076	7	90	1000
V-120-7			CV-120-7	0.120	7		1000
V-120-7-90				0.120	7	90	1000
			CV-180-7	0.180	7		500
V-076-8	S-076-8	C-076-8	CV-076-8	0.076	8		500
V-076-8-90				0.076	8	90	500
V-120-8	S-120-8	C-120-8	CV-120-8	0.120	8		500
V-120-8-90				0.120	8	90	500
V-180-8	S-180-8	C-180-8	CV-180-8	0.180	8		250
V-076-10	S-076-10	C-076-10		0.076	10		500
V-120-10	S-120-10	C-120-10	CV-120-10	0.120	10		500
V-120-10-90				0.120	10	90	500
V-180-10	S-180-10	C-180-10		0.180	10		250
V-076-12				0.076	12		500
V-076-12-90				0.076	12	90	500
V-120-12	S-120-12	C-120-12	CV-120-12	0.120	12		500
V-120-12-90				0.120	12	90	500
V-180-12	S-180-12	C-180-12		0.180	12		250
V-076-14				0.076	14		500
V-076-14-90				0.076	14	90	500
V-120-14	S-120-14	C-120-14	CV-120-14	0.120	14		500
V-180-14	S-180-14	C-180-14		0.180	14		250
			CV-180-16	0.180	16		250
V-076-18				0.076	18		500
V-120-18				0.120	18		250
V-120-18-90				0.120	18	90	250
V-180-18			CV-180-18	0.180	18		250
V-180-18-90				0.180	18	90	250
V-076-24				0.076	24		500
V-120-24	S-120-24	C-120-24		0.120	24		250
V-180-24	S-180-24		CV-180-24	0.180	24		250
V-180-24-90				0.180	24	90	250
V-120-32				0.120	32		250
V-180-32				0.180	32		250



SQUARE V - HOOKS

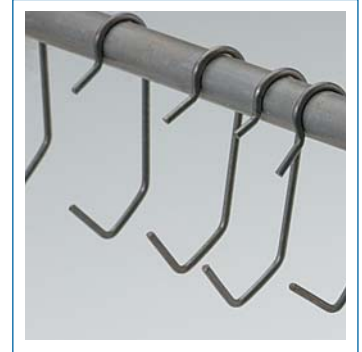


- Ideal for Powder Coating and E-Coating
- Reduces Hook Mark
- Consistent grounding for more cycles
- Increased hook life without stripping (burn off)

Part Number	Dimensions (Inches)		Quantity Per Bag
	Wire Dia.	Length	
SQV-120-4	0.120	4	1000
SQV-180-4	0.180	4	500
SQV-250-4	0.250	4	250
SQV-120-6	0.120	6	1000
SQV-180-6	0.180	6	500
SQV-250-6	0.250	6	250
SQV-120-8	0.120	8	500
SQV-180-8	0.180	8	250
SQV-250-8	0.250	8	250
SQV-120-12	0.120	12	250
SQV-180-12	0.180	12	250
SQV-250-12	0.250	12	125
SQV-120-16	0.120	16	250
SQV-180-16	0.180	16	250
SQV-250-16	0.250	16	125
SQV-120-20	0.120	20	250
SQV-180-20	0.180	20	125
SQV-250-20	0.250	20	125
SQV-120-24	0.120	24	250
SQV-180-24	0.180	24	125
SQV-250-24	0.250	24	125

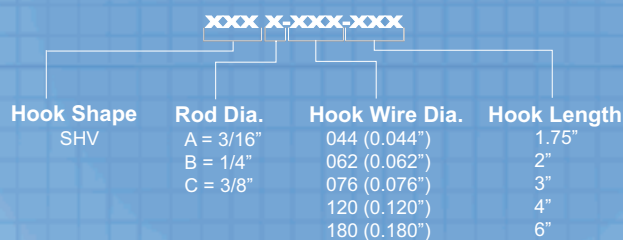
SNAP HOOKS

Part Number	Dimensions (Inches)		Quantity Per Bag
	Wire Dia.	Length	
SHVA-044-1.75	0.044	1.750	1000
SHVA-062-1.75	0.062	1.750	1000
SHVA-076-1.75	0.076	1.750	1000
SHVB-044-1.75	0.044	1.750	1000
SHVB-062-1.75	0.062	1.750	1000
SHVB-076-1.75	0.076	1.750	1000
SHVC-044-1.75	0.044	1.750	1000
SHVC-062-1.75	0.062	1.750	1000
SHVC-076-1.75	0.076	1.750	1000
SHVA-062-2	0.062	2	1000
SHVA-076-2	0.076	2	1000
SHVB-062-2	0.062	2	1000
SHVB-076-2	0.076	2	1000
SHVC-062-2	0.062	2	1000
SHVC-076-2	0.076	2	1000
SHVA-044-3	0.044	3	1000
SHVA-062-3	0.062	3	1000
SHVB-044-3	0.044	3	1000
SHVB-062-3	0.062	3	1000
SHVC-044-3	0.044	3	1000
SHVC-062-3	0.062	3	1000
SHVA-044-4	0.044	4	1000
SHVA-062-4	0.062	4	1000
SHVA-076-4	0.076	4	1000
SHVB-044-4	0.044	4	1000
SHVB-062-4	0.062	4	1000
SHVB-076-4	0.076	4	1000
SHVC-044-4	0.044	4	1000
SHVC-062-4	0.062	4	1000
SHVC-076-4	0.076	4	1000
SHVA-044-6	0.044	6	1000
SHVA-062-6	0.062	6	1000
SHVA-076-6	0.076	6	1000
SHVB-044-6	0.044	6	1000
SHVB-062-6	0.062	6	1000
SHVB-076-6	0.076	6	1000
SHVC-044-6	0.044	6	1000
SHVC-062-6	0.062	6	1000
SHVC-076-6	0.076	6	1000



- Maintains fixed spacing
- Locks firmly in position
- Solid metal to metal contact
- High load capacity

SNAP HOOK PART NUMBERS



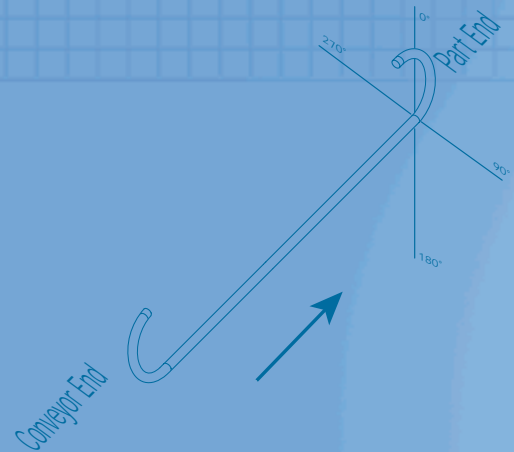
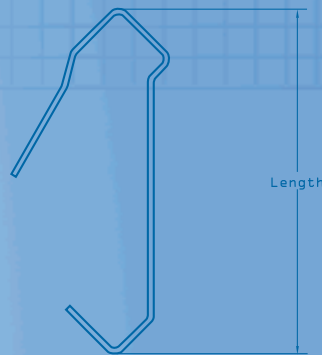
Example:
The part number for a V-shaped Snap Hook, to snap onto a 3/8" diameter bar, made from 0.062" diameter wire with a length of 3" would be **SHVC-062-3**.

SMART HOOKS™



- To be used with the Shercon modular rack
- Perfect contact every time
- Hooks lock into position

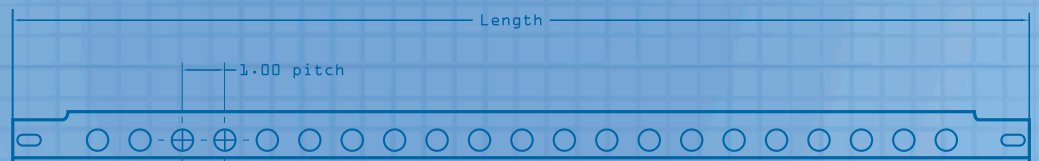
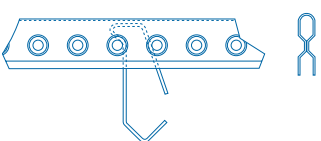
Part Number	Dimensions (Inches)		Angle	Quantity Per Bag
	Wire Dia.	Length		
VB-047-2-270	0.047	2	270°	500
VB-047-2.5-270	0.047	2.500	270°	500
VB-047-3-270	0.047	3	270°	500
VB-062-3	0.062	3		500
VB-062-3-270	0.062	3	270°	500
VB-047-4	0.047	4		500
VB-062-4	0.062	4		500
VB-062-4-270	0.062	4	270°	500
VB-076-4	0.076	4		500
VB-076-4-270	0.076	4	270°	500



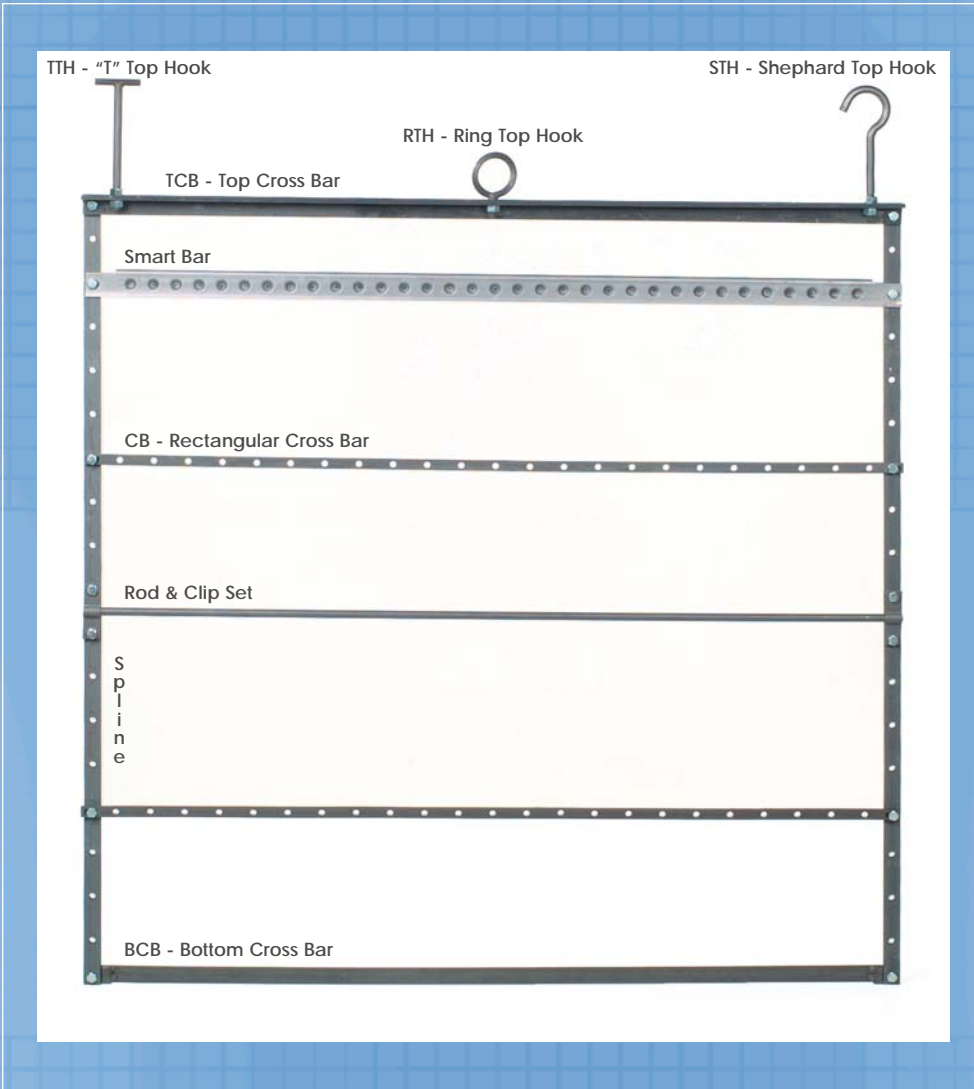
SMART BAR™

- To be used with the Shercon Modular Rack
- Perfect contact every time
- Hooks lock into position

Part Number	Dimensions (Inches)	
	Length	Height
SB-24	24.000	1.260
SB-36	36.000	1.260
SB-48	48.000	1.260



MODULAR RACKS



- Design your own custom rack from Shercon stock parts

Top Cross Bars

TCB-24	24" Length
TCB-36	36" Length
TCB-48	48" Length

Splines

SPLINE-24	24" Length
SPLINE-36	36" Length
SPLINE-48	48" Length

Rectangular Cross Bars

CB-24	24" Length
CB-36	36" Length
CB-48	48" Length

Bottom Cross Bars

BCB-24	24" Length
BCB-36	36" Length
BCB-48	48" Length

Top Hooks

STH
TTH
RTH

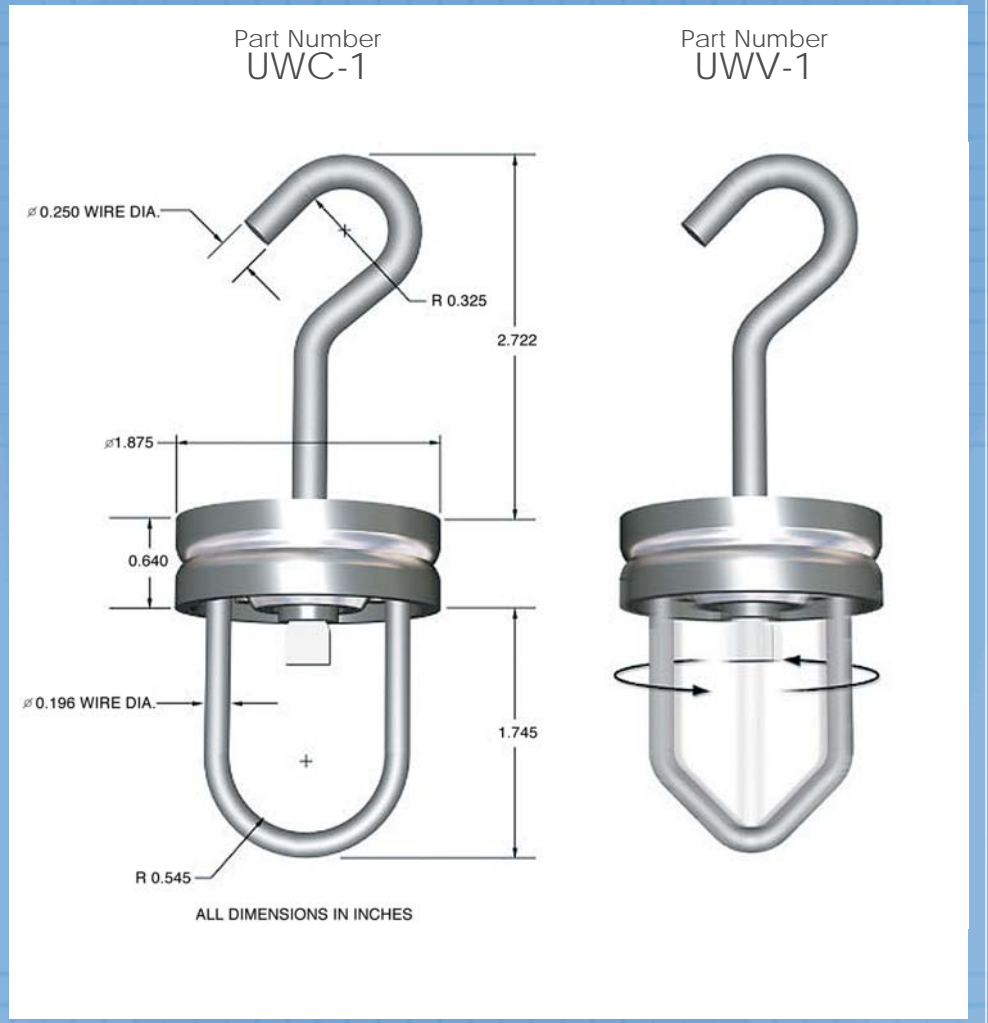
Rod and Clip Sets

ROD-3/16-24	24" Length
ROD-3/16-36	36" Length
ROD-3/16-48	48" Length
ROD-1/4-24	24" Length
ROD-1/4-36	36" Length
ROD-1/4-48	48" Length
ROD-3/8-24	24" Length
ROD-3/8-36	36" Length
ROD-3/8-48	48" Length

SPIN HOOKS



- Low cost solution to increase powder-coating capability
- Rotate part/rack
- Ball bearing construction
- Durable
- We have the capability to produce conveyor hooks



MASKING SOLUTIONS

Mask Type	Application	Removal	Effectiveness	Availability	Price
Customer Tape	Slow (manual application; cut to fit)	Tool required (chance of marring finish)	Varies; can be excellent, but slow	Always available if you have tape and time	Low materials cost, but time-consuming
Die-Cut Mask	Fast (Peel & Stick)	Fast (removal tabs built-in)	Excellent (if correct tape used)	Good; 2-3 days required for production	Low materials cost and efficient application = low price point
Molded Mask	Extremely Rapid ("plug-and-paint")	Rapid (tug a handle)	Usually the most effective masking system	Reusable, but prototyping and mold-making can take weeks	Initial engineering cost is higher than die-cut masks; great for high-volume lines and for demanding applications

ORDER POLICIES

FULFILLMENT / ORDER PROCESSING PROCEDURES

Upon receipt, we will promptly acknowledge your order via fax or via e-mail. It will show which products you purchased, your total cost, and shipping details. If you don't receive your confirmation, you may inquire by e-mail at customerservice@shercon.com or by phone at 1-800-228-3218.

Orders for stock items are processed, packed and shipped within 24 hours of the time they are received.

PAYMENT TERMS

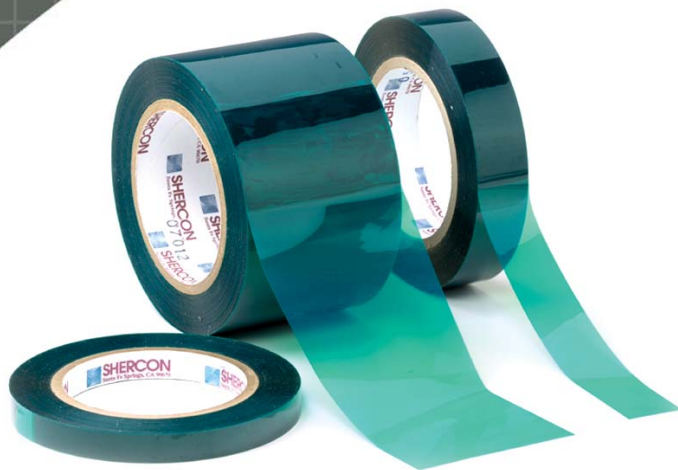
- Visa/MasterCard/American Express.
- Net 30 on approved credit.
- C.O.D. is available.
- Minimum order \$75.00
- All prices are in U.S. dollars

RETURN / REFUND POLICY

1. A 15% restocking fee may apply for items returned that are not defective. The fee also applies if you order the wrong parts. All items must be in original packaging (for example, die-cuts must not have the protective film peeled off) and show no signs of use.
2. All orders must be returned within 90 days from the date of the invoice.
3. NO ORDERS will be accepted without an RMA (Return Merchandise Authorization) number. Please contact our customer service desk at 1-800-228-3218 to request an RMA number. Orders must be returned with the RMA number and description of the problem. The RMA number must be on the outside of the shipping box.
4. You may return defective products for replacement. A credit will be issued after our Quality Control approves the return.

SHIPPING OPTIONS

UPS, Fed Ex, and DHL.



10425 Slusher Drive, Santa Fe Springs, CA 90670
Toll Free: 800.228.3218 Toll Free Fax: 800.995.8988
www.shercon.com sales@shercon.com